

2012 ROV

ILLUSTRATED PARTS MANUAL

WILDCAT 1000 GT



Model Number U2012W2W1PUSQ
Model Number U2012W2W1POSQ
Model Number U2012W2W1PUSA
Model Number U2012W2W1POSA

ARCTIC CAT®
SHARE OUR PASSION.™

TABLE OF CONTENTS

2012 Wildcat 1000 GT

Metallic Black (Model No.U2012W2W1PUSQ)

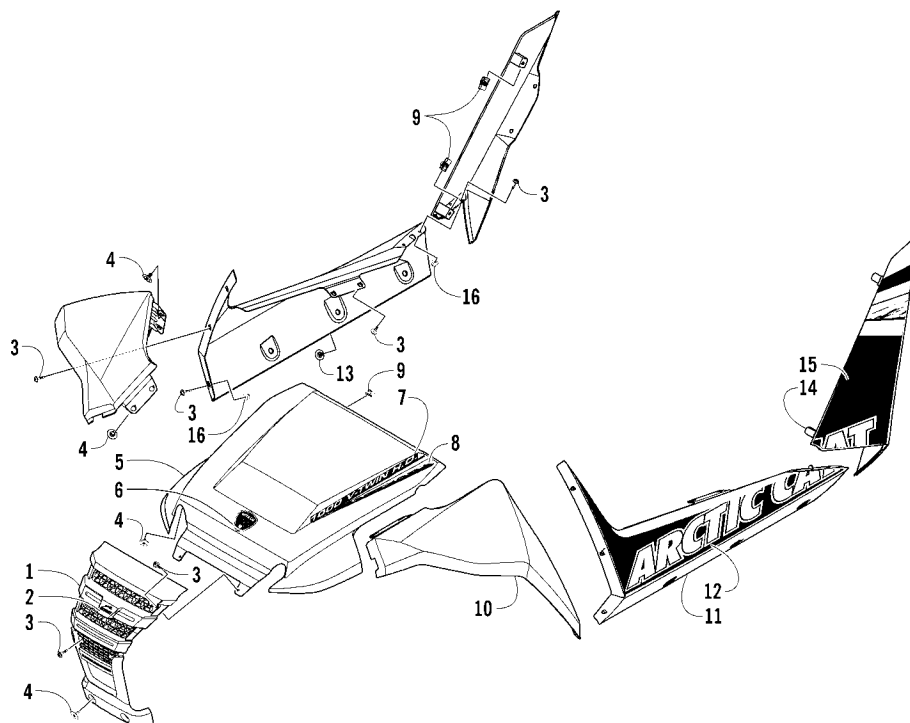
Metallic Black - International (Model No. U2012W2W1POSQ)

Metallic Green (Model No.U2012W2W1PUSA)

Metallic Green - International (Model No. U2012W2W1POSA)

FRONT AND SIDE PANEL ASSEMBLIES	1
DASH ASSEMBLY	2
CONSOLE AND FLOOR PANEL ASSEMBLY	3
SEAT ASSEMBLY	4
CARGO BOX AND TAILLIGHT ASSEMBLY	5
FRAME, HEADLIGHTS, AND RELATED PARTS	6
ROPS ASSEMBLY	7
DOOR ASSEMBLY	8
STEERING ASSEMBLY	9
RACK AND PINION ASSEMBLY	10
FRONT SUSPENSION ASSEMBLY	11
REAR SUSPENSION ASSEMBLY	12
REAR SUSPENSION SHOCK ASSEMBLY	13
WHEEL AND TIRE ASSEMBLY	14
HYDRAULIC BRAKE ASSEMBLY	15
ACCELERATOR ASSEMBLY	16
SHIFTER ASSEMBLY	17
GAS TANK ASSEMBLY	18
AIR INTAKE ASSEMBLY	19
CASE/BELT COOLING ASSEMBLY	20
ENGINE AND EXHAUST	21
COOLING ASSEMBLY	22
OIL COOLER ASSEMBLY	23
DRIVE TRAIN ASSEMBLY	24
FRONT DRIVE GEARCASE ASSEMBLY	25
REAR DRIVE GEARCASE ASSEMBLY	26
WIRING HARNESS ASSEMBLY	27
BATTERY AND STARTER MOTOR ASSEMBLY	28
THROTTLE BODY ASSEMBLY	29
CYLINDER ASSEMBLY	30
CYLINDER HEAD AND CAMSHAFT/VALVE ASSEMBLY	31
CAM CHAIN ASSEMBLY	32
CRANKCASE ASSEMBLY	33
CRANKCASE ASSEMBLY	34
CRANKSHAFT AND PISTON ASSEMBLY	35
STARTER CLUTCH ASSEMBLY	36
OIL PUMP ASSEMBLY	37
WATER PUMP ASSEMBLY	38
WATER PUMP ASSEMBLY	39
TRANSMISSION ASSEMBLY	40
TRANSMISSION ASSEMBLY	41
SECONDARY TRANSMISSION ASSEMBLY	42
GEAR SHIFTING ASSEMBLY	43
SECONDARY DRIVE ASSEMBLY	44
MAGNETO ASSEMBLY	45
MAGNETO SIDE ENGINE COVERS	46
CLUTCH SIDE ENGINE COVERS	47

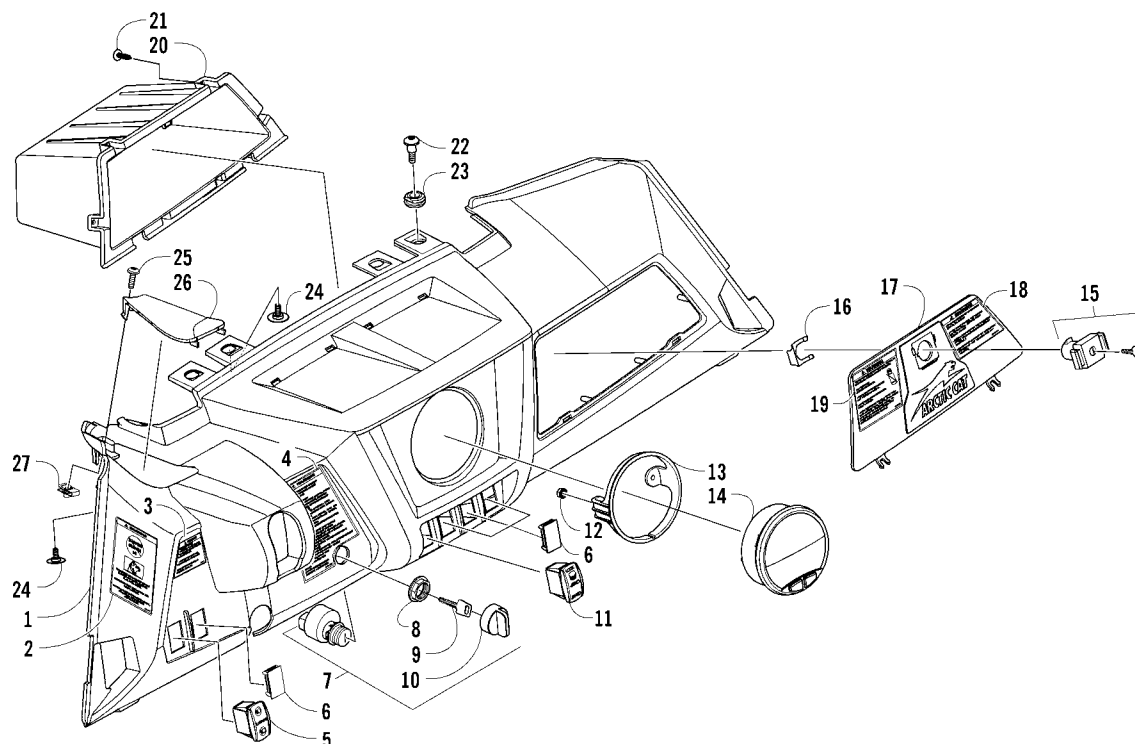
■ **NOTE:** The illustrations used in this Parts Manual are for reference to replacement part numbers only and are not to be used for assembly. For assembly procedures, use an Arctic Cat Service Manual. For a complete list of related items, refer to the current accessory catalog.



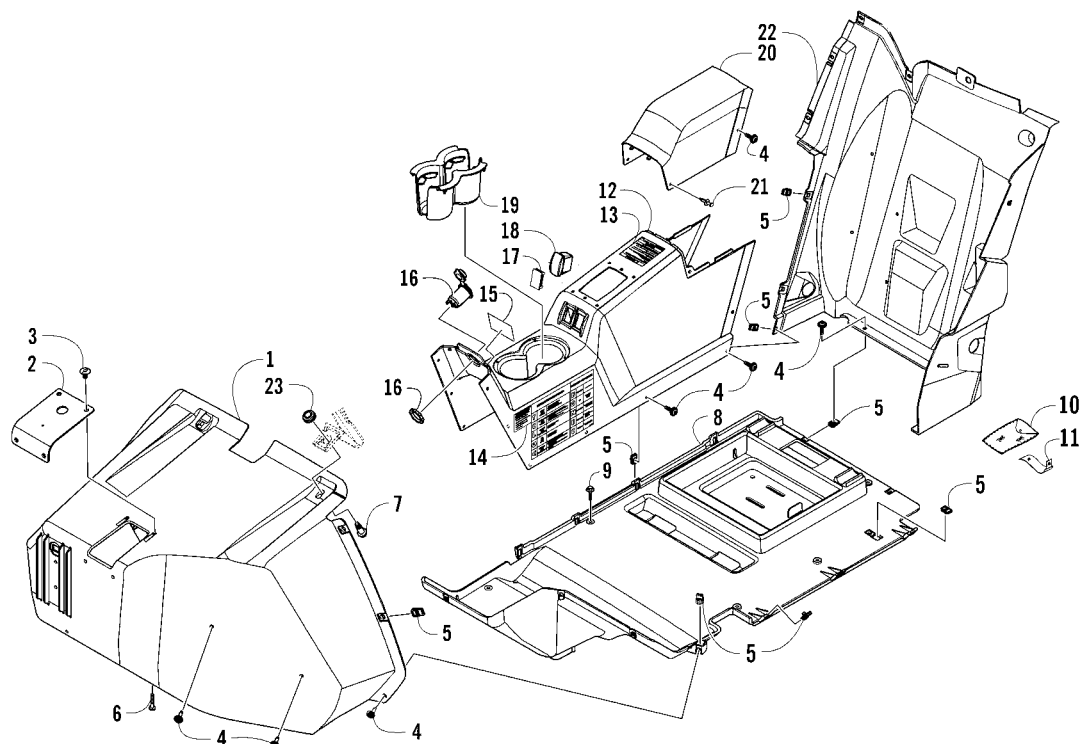
FRONT AND SIDE PANEL ASSEMBLIES

0746-547

Ref	Part No.	New	Qty	Description	Ref	Part No.	New	Qty	Description
1	2416-685	X	1	Fascia, Front - Black	12	2411-966	X	1	Decal, Lower Side Panel - Right (1PUSQ/1POSQ)
2	2411-943	X	1	Decal, "Arctic Cat"		2411-967	X	1	Decal, Lower Side Panel - Left (1PUSQ/1POSQ)
3	0423-609		16	Screw, Machine		2411-954	X	1	Decal, Lower Side Panel - Right (1PUSA/1POSA)
4	0423-101		12	Screw, Shoulder		2411-955	X	1	Decal, Lower Side Panel - Left (1PUSA/1POSA)
5	4506-772	X	1	Hood - Black (1PUSQ/1POSQ)	13	1423-133	X	6	Screw, Shoulder
	4506-786	X	1	Hood - Green (1PUSA/1POSA)	14	2416-990	X	1	Panel, Side - Upper Right - Black
6	9611-603	X	1	Decal, 50th Anniversary		2416-991	X	1	Panel, Side - Upper Left - Black
7	2411-945	X	2	Decal, "1000 V-Twin"	15	2411-968	X	1	Decal, Upper Side Panel - Right (1PUSQ/1POSQ)
8	2411-958	X	1	Decal, Hood - Right (1PUSQ/1POSQ)		2411-969	X	1	Decal, Upper Side Panel - Left (1PUSQ/1POSQ)
	2411-959	X	1	Decal, Hood - Left (1PUSQ/1POSQ)		2411-956	X	1	Decal, Upper Side Panel - Right (1PUSA/1POSA)
	2411-946	X	1	Decal, Hood - Right (1PUSA/1POSA)		2411-957	X	1	Decal, Upper Side Panel - Left (1PUSA/1POSA)
	2411-947	X	1	Decal, Hood - Left (1PUSA/1POSA)	16	8427-602		4	Nut, Lock
9	0423-577		6	Clip, U-Nut					
10	4506-756	X	1	Fender, Front - Right - Black (1PUSQ/1POSQ)					
	4506-757	X	1	Fender, Front - Left - Black (1PUSQ/1POSQ)					
	4506-788	X	1	Fender, Front - Right - Green (1PUSA/1POSA)					
	4506-789	X	1	Fender, Front - Left - Green (1PUSA/1POSA)					
11	2416-988	X	1	Panel, Side - Lower Right - Black					
	2416-989	X	1	Panel, Side - Lower Left - Black					



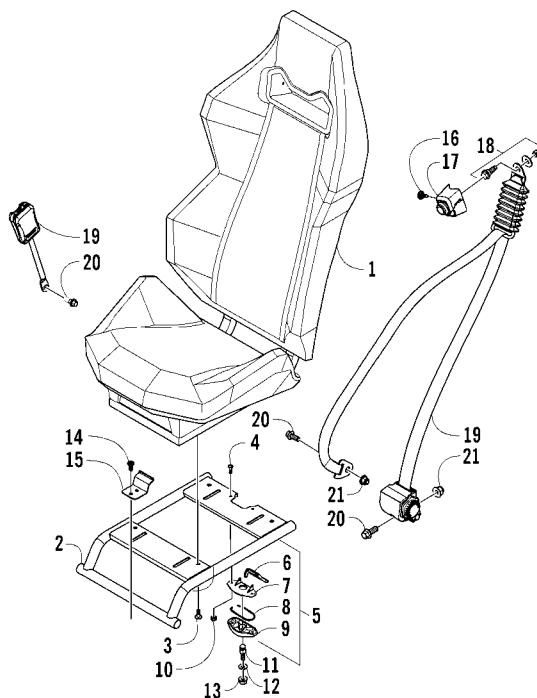
Ref	Part No.	New	Qty	Description	Ref	Part No.	New	Qty	Description
1	4406-168	X	1	Panel, Dash (inc. 2-4)	13	0620-322		1	Bracket, Retaining
2	2411-894	X	1	● Decal, Warning - Age	14	0520-206	X	1	Gauge, Analog/LCD
3	2411-893	X	1	● Decal, Warning - Dash - Left	15	2416-985	X	1	Latch, Glove Box
4	2411-892	X	1	● Decal, Warning - Dash - Right	16	2416-984	X	1	Clip, Retaining
5	0409-149	X	1	Switch, Light	17	4406-169	X	1	Cover, Glove Box (inc. 18-19)
6	0409-070		4	Plug, Switch-Hole	18	2411-970	X	1	● Decal, Warning - Occupant - Right
7	0430-089		1	Switch, Ignition (inc. 8-10)	19	2411-971	X	1	● Decal, Warning - Occupant - Left
8	0430-050		1	● Nut, Retaining	20	2416-842	X	1	Box, Glove
9	0430-042		1	● Key, Ignition - (Y Series - Left-Side Cut)	21	0423-342		6	Screw, Self-Tapping
	0430-043		1	● Key, Ignition - (Z Series - Right-Side Cut)	22	0423-356		2	Screw, Shoulder
10	0430-054		1	● Cover, Key	23	1423-104	X	2	Grommet
11	0409-148	X	1	Switch, 2WD/4WD/Differential Lock	24	1423-133	X	4	Screw, Shoulder
12	0423-493		2	Nut w/Washer	25	8477-620		1	Screw, Machine
					26	2416-840	X	1	Panel, Access - Master Cylinder
					27	0423-577		3	Clip, U-Nut



CONSOLE AND FLOOR PANEL ASSEMBLY

0746-556

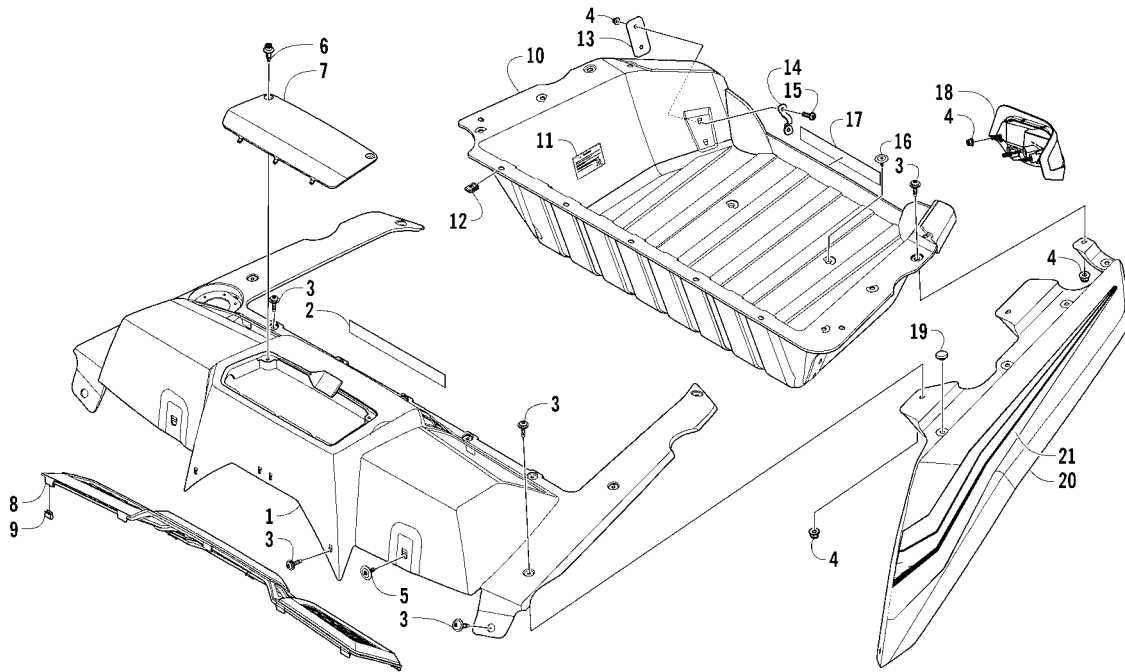
Ref	Part No.	New	Qty	Description	Ref	Part No.	New	Qty	Description
1	2416-592	X	1	Panel, Fender - Inner Right	12	4406-170	X	1	Console - Front (inc. 13-15)
	2416-593	X	1	Panel, Fender - Inner Left	13	2411-895	X	1	● Decal, Warning - Reverse
2	2416-983	X	1	Panel, Filler - Brake Pedal	14	2411-940	X	1	● Decal, Pre-Ride
3	0623-544		4	Clip, Retaining	15	2411-311	X	1	● Decal, Starting Instruction
4	0423-609		38	Screw, Machine	16	0641-897		1	Outlet, Accessory - 12V
5	0423-577		48	Clip, U-Nut	17	0409-070		1	Plug, Switch-Hole
6	1423-083	X	4	Screw, Self-Tapping	18	0409-071		1	Switch, Override
7	1423-125	X	4	Screw, Shoulder	19	2416-109		1	Insert, Cupholder
8	2416-516	X	1	Panel, Floor - Right	20	2416-841	X	1	Cover, Access - Battery
	2416-517	X	1	Panel, Floor - Left	21	0623-362		2	Rivet, Reinstallable
9	1423-142	X	16	Screw, Cap w/Washer	22	2416-518	X	1	Panel, Splash - Right
10	2516-863		1	Kit, Tool		2416-519	X	1	Panel, Splash - Left
11	0707-582		1	Retainer, Tool Kit	23	1423-104	X	4	Grommet



SEAT ASSEMBLY

0746-557

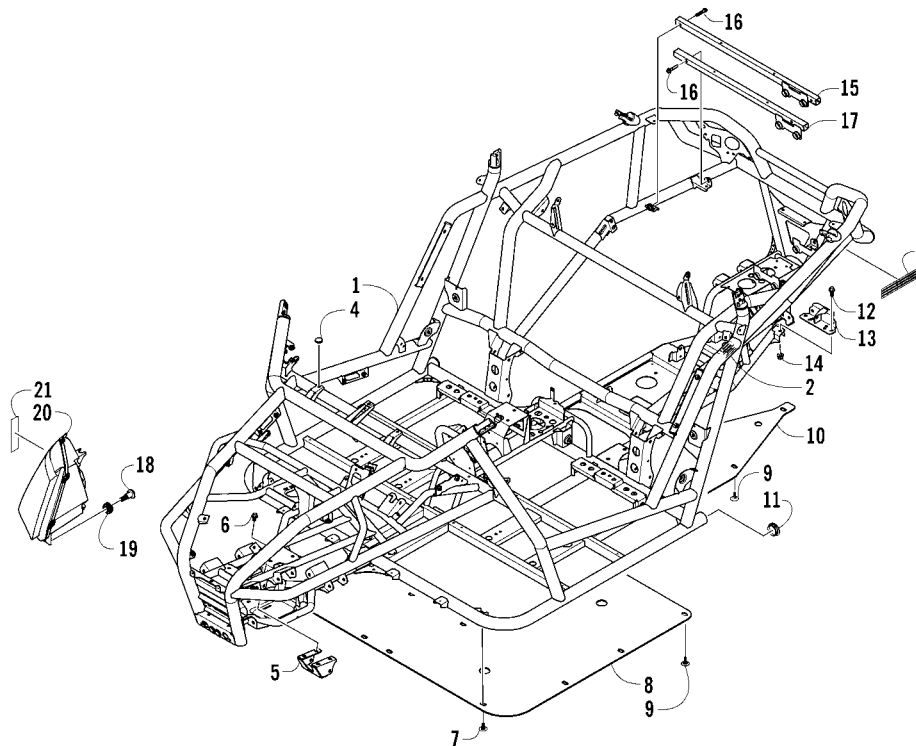
Ref	Part No.	New	Qty	Description	Ref	Part No.	New	Qty	Description
1	4506-532	X	2	Seat - Assembly	12	0423-073		2	Washer
2	4506-662	X	2	Base, Seat	13	8424-002		2	Nut
3	0423-817		8	Screw, Machine	14	8408-821		8	Screw, Cap
4	8468-620		4	Screw, Machine	15	4506-691	X	4	Bracket, Hold-Down
5	2706-164		2	Latch, Seat - Assembly (inc. 6-9)	16	0623-784		4	Screw, Self-Tapping
6	2606-854		2	● Lever, Seat Latch	17	2416-936	X	1	Cover, Seat Belt - Right
7	1673-635		2	● Cover, Seat Latch	18	2416-937	X	1	Cover, Seat Belt - Left
8	0673-023		2	● Clip, Spring	19	0423-915		2	Screw, Shoulder - Assembly
9	1673-634		2	● Back, Seat Latch	20	2516-886	X	2	Belt, Seat - Assembly
10	0623-038		4	Nut w/Washer	21	8409-025		6	Screw, Cap
11	0423-559		2	Stud, Latch - Seat		8427-002		4	Nut, Lock



CARGO BOX AND TAILLIGHT ASSEMBLY

0746-561

Ref	Part No.	New	Qty	Description	Ref	Part No.	New	Qty	Description
1	4506-774	X	1	Panel, Rear Body - Black (1PUSQ/1POSQ)	17	2411-944	X	1	Decal, "Arctic Cat"
	4506-787	X	1	Panel, Rear Body - Green (1PUSA/1POSA)	18	0509-056	X	1	Taillight - Right
2	2411-945	X	1	Decal, "1000 V-Twin"	19	0509-057	X	1	Taillight - Left
3	0423-609		19	Screw, Machine	20	0406-877		12	Bumper
4	8427-602		24	Nut, Lock		4506-760	X	1	Fender, Rear - Right - Black (1PUSQ/1POSQ)
5	1423-107	X	2	Screw, Shoulder		4506-761	X	1	Fender, Rear - Left - Black (1PUSQ/1POSQ)
6	0423-535		2	Rivet, Reinstallable		4506-790	X	1	Fender, Rear - Right - Green (1PUSA/1POSA)
7	2416-825	X	1	Cover, Access - Radiator		4506-791	X	1	Fender, Rear - Left - Green (1PUSA/1POSA)
8	2416-956	X	1	Screen, Vent	21	2411-964	X	1	Decal, Rear Fender - Right (1PUSQ/1POSQ)
9	0123-987		12	Clip, U		2411-965	X	1	Decal, Rear Fender - Left (1PUSQ/1POSQ)
10	4406-167	X	1	Box, Cargo (inc. 11)		2411-952	X	1	Decal, Rear Fender - Right (1PUSA/1POSA)
11	2411-890	X	1	● Decal, Warning - Cargo Box		2411-953	X	1	Decal, Rear Fender - Left (1PUSA/1POSA)
12	0423-577		5	Clip, U-Nut					
13	2416-573	X	4	Plate, Backing					
14	4506-634	X	4	Bracket, Hold-Down					
15	8468-625		8	Screw, Machine					
16	1423-109	X	4	Screw, Shoulder					



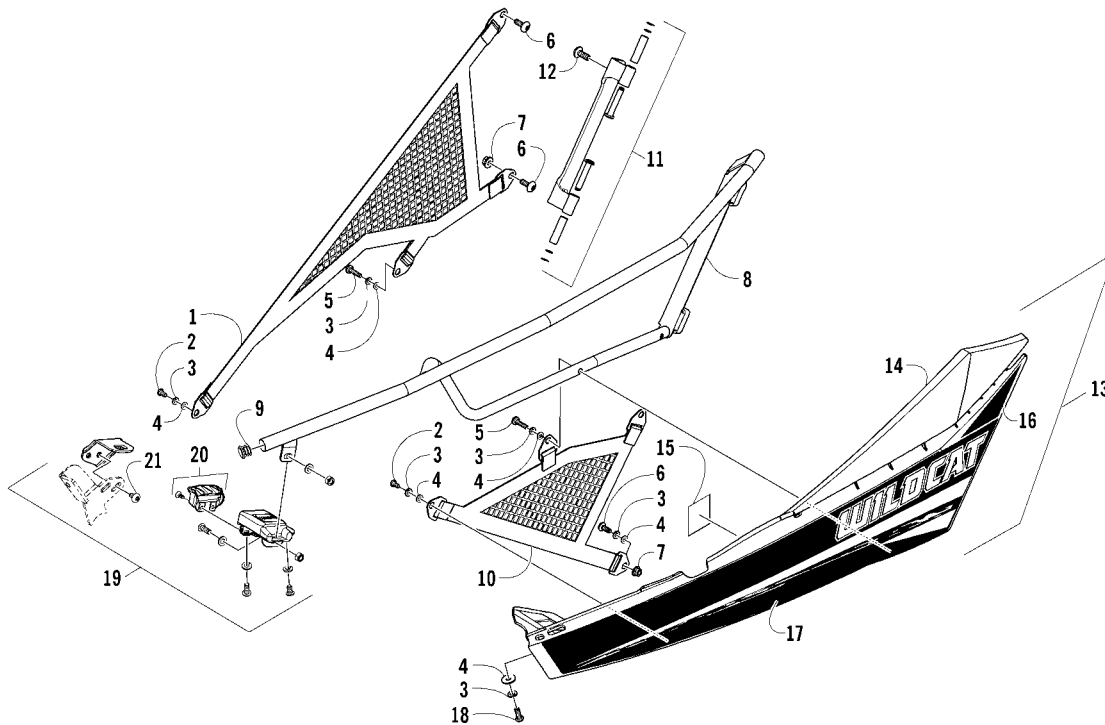
FRAME, HEADLIGHTS, AND RELATED PARTS

0746-562

Ref	Part No.	New	Qty	Description	Ref	Part No.	New	Qty	Description
1	5506-050	X	1	Frame, Main (inc. 2-3)	13	4506-637	X	1	Bracket, Support - Rear Gearcase
2	2411-941	X	1	● Decal, Warning - ROPS	14	8428-002	X	2	Nut, Lock
3	2411-974	X	2	● Decal, Reflector - Red	15	4506-680	X	1	Tube, Support - Front
4	0406-877	X	1	Bumper	16	8408-840	X	4	Screw, Cap
5	4506-703	X	1	Bracket, Support - Front Gearcase	17	4506-682	X	1	Tube, Support - Rear
6	8409-018	X	4	Screw, Cap	18	0423-356	X	6	Screw, Shoulder
7	0423-101	X	2	Screw, Shoulder	19	1423-104	X	6	Grommet
8	4506-406	X	1	Plate, Skid - Front	20	0509-064	X	1	Headlight Assembly - Right (inc. 21)
9	1423-109	X	21	Screw, Self-Tapping	21	0509-065	X	1	Headlight Assembly - Left (inc. 21)
10	4506-407	X	1	Plate, Skid - Rear		2411-972	X	1	● Decal, Reflector - Right - Amber
11	2416-962	X	2	Plug, Hole		2411-973	X	1	● Decal, Reflector - Left - Amber
12	8409-025	X	2	Screw, Cap					



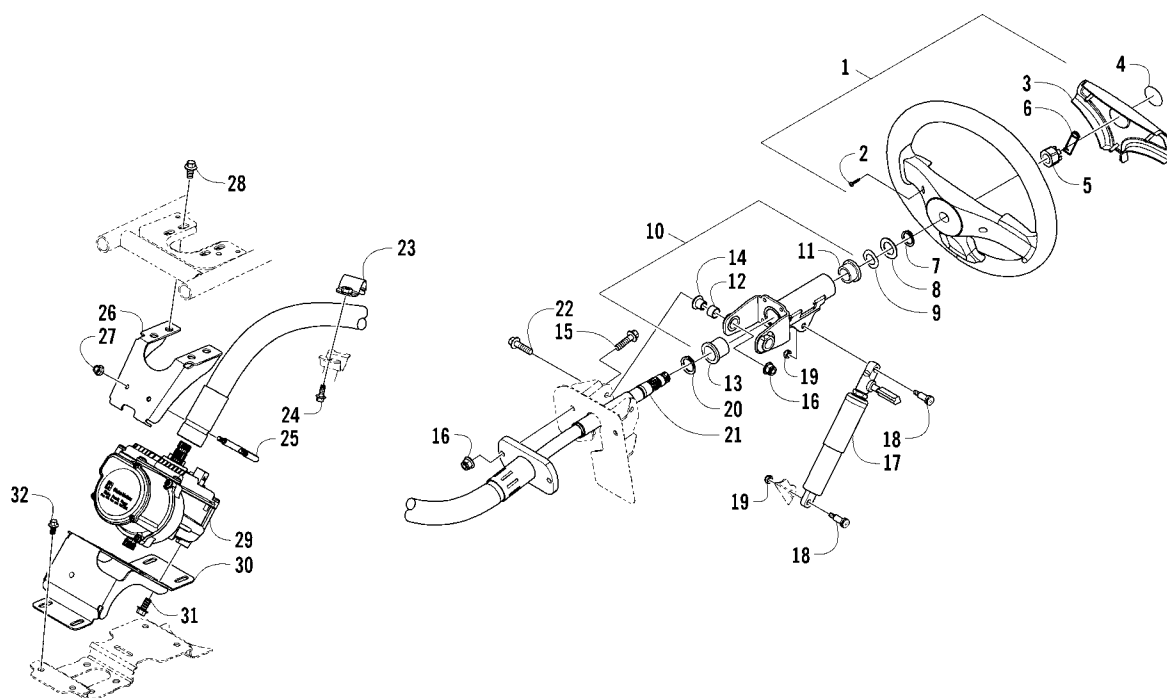
Ref	Part No.	New	Qty	Description	Ref	Part No.	New	Qty	Description
1	4506-409	X	1	ROPS - Front Assembly	4	8427-805		16	Nut, Lock
2	0411-501		1	Decal, "Arctic Cat"	5	4506-499	X	1	ROPS - Rear Assembly
3	8410-835		16	Screw, Cap					



DOOR ASSEMBLY

0746-563

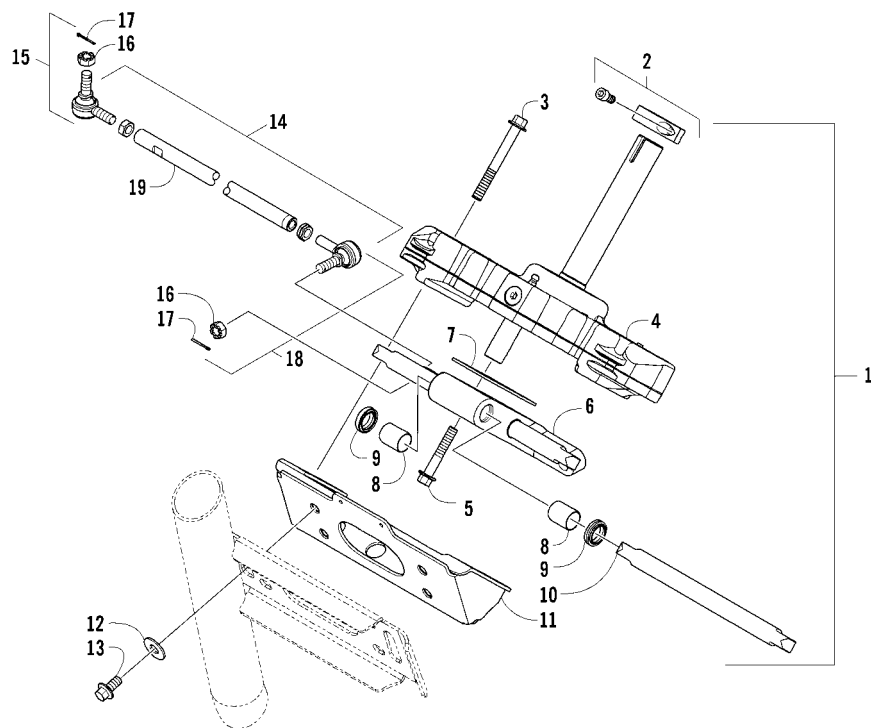
Ref	Part No.	New	Qty	Description	Ref	Part No.	New	Qty	Description
1	4406-133	X	1	Net, Restraint - Upper Right	15	2411-891	X	1	● Decal, Warning - Tire Pressure
	4406-140	X	1	Net, Restraint - Upper Left	16	2411-960	X	1	● Decal, Door - Upper Right (1PUSQ/1POSQ)
2	1423-156	X	8	Screw, Shoulder		2411-961	X	1	● Decal, Door - Upper Left (1PUSQ/1POSQ)
3	1423-120	X	16	Washer, Lock		2411-948	X	1	● Decal, Door - Upper Right (1PUSA/1POSA)
4	1423-152	X	14	Washer		2411-949	X	1	● Decal, Door - Upper Left (1PUSA/1POSA)
5	1423-157	X	8	Screw, Shoulder	17	2411-962	X	1	● Decal, Door - Lower Right (1PUSQ/1POSQ)
6	0826-029		4	Screw, Machine		2411-963	X	1	● Decal, Door - Lower Left (1PUSQ/1POSQ)
7	0423-540		2	Nut, Lock		2411-950	X	1	● Decal, Door - Lower Right (1PUSA/1POSA)
8	1436-450	X	1	Frame, Door - Right		2411-951	X	1	● Decal, Door - Lower Left (1PUSA/1POSA)
	1436-451	X	1	Frame, Door - Left	18	1423-114	X	2	Screw, Machine
9	4406-013	X	4	Plug, Hole	19	1436-452	X	1	Latch, Door - Right Assembly
10	4406-148	X	1	Net, Restraint - Lower Right		1436-453	X	1	Latch, Door - Left Assembly
	4406-142	X	1	Net, Restraint - Lower Left	20	1436-475	X	2	Guide, Door Latch - Assembly
11	1436-476	X	1	Hinge, Door - Right Assembly	21	8468-612	X	4	Screw, Machine
	1436-454	X	1	Hinge, Door - Left Assembly					
12	0423-817		4	Screw, Machine					
13	5506-082	X	1	Door w/Decals - Right - Black (inc. 14 and 16-17) (1PUSQ/1POSQ)					
	5506-083	X	1	Door w/Decals - Left - Black (inc. 14-17) (1PUSQ/1POSQ)					
	5506-080	X	1	Door w/Decals - Right - Black (inc. 14 and 16-17) (1PUSA/1POSA)					
	5506-081	X	1	Door w/Decals - Left - Black (inc. 14-17) (1PUSA/1POSA)					
14	4406-036	X	1	● Door w/o Decals - Right - Black					
	5506-061	X	1	● Door w/o Decals - Left - Black (inc. 15)					



STEERING ASSEMBLY

0746-595

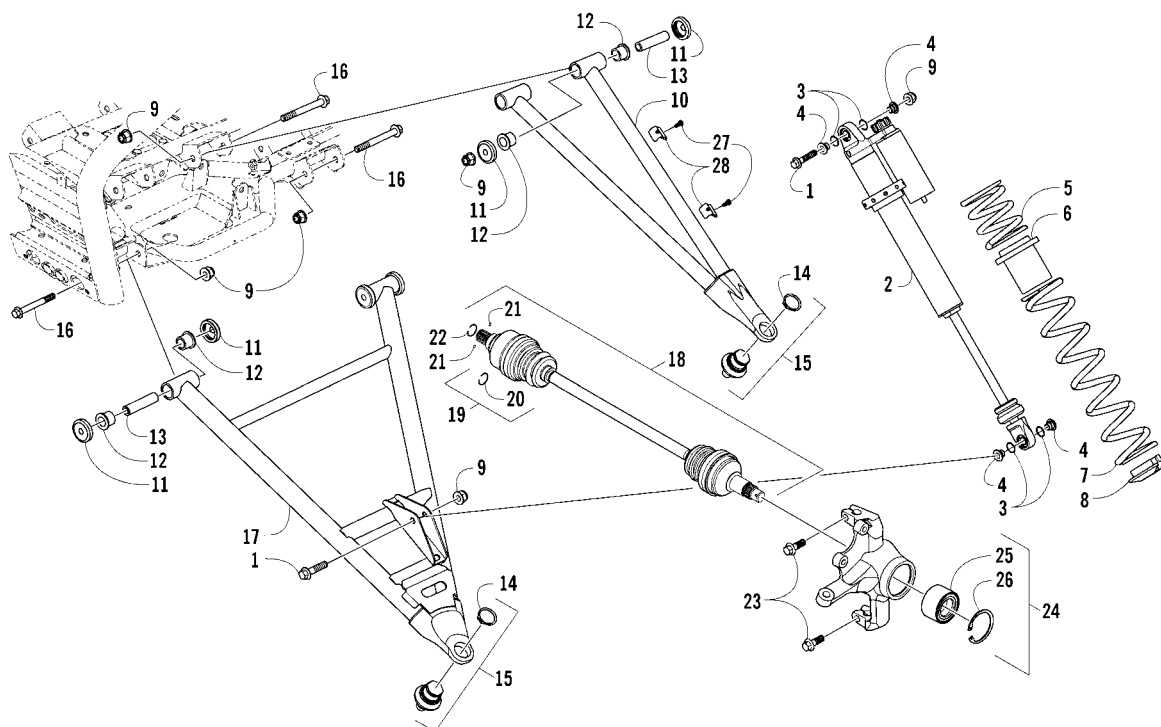
Ref	Part No.	New	Qty	Description	Ref	Part No.	New	Qty	Description
1	0502-884		1	Wheel, Steering - Assembly (inc. 2-3)	17	0405-468	X	1	Lift, Support
2	0423-613		3	● Screw, Self-Tapping	18	1423-148	X	2	Screw, Shoulder
3	0405-239		1	● Cap, Steering Wheel	19	0624-250		2	Nut, Lock
4	1411-798		1	Decal, Steering Wheel	20	1423-111	X	1	Ring, Retaining
5	0423-884		1	Nut	21	0405-403	X	1	Shaft, Steering
6	1423-045		1	Clip, Retaining	22	8408-830	X	2	Screw, Cap
7	1423-110	X	1	Ring, Retaining	23	0505-765	X	1	Bracket, Retaining
8	0828-071		1	Washer	24	8408-617		1	Screw, Cap
9	0423-558		1	Washer	25	1423-073	X	1	U-Clamp
10	0505-721	X	1	Bracket, Mounting - Tilt Steering (inc. 11-13)	26	0505-758	X	1	Bracket, Mounting
11	0405-472	X	1	● Bushing	27	8427-602		2	Nut, Lock
12	0405-405	X	2	● Bushing	28	8408-816		4	Screw, Cap
13	0405-473	X	1	● Bushing	29	0505-787	X	1	Assembly, Electronic Power Steering
14	0423-669		2	Spacer	30	4506-619	X	1	Bracket, Mounting
15	8408-831		2	Screw, Cap	31	8409-020		4	Screw, Cap
16	8427-802		4	Nut, Lock	32	8408-818		4	Screw, Cap



RACK AND PINION ASSEMBLY

0746-594

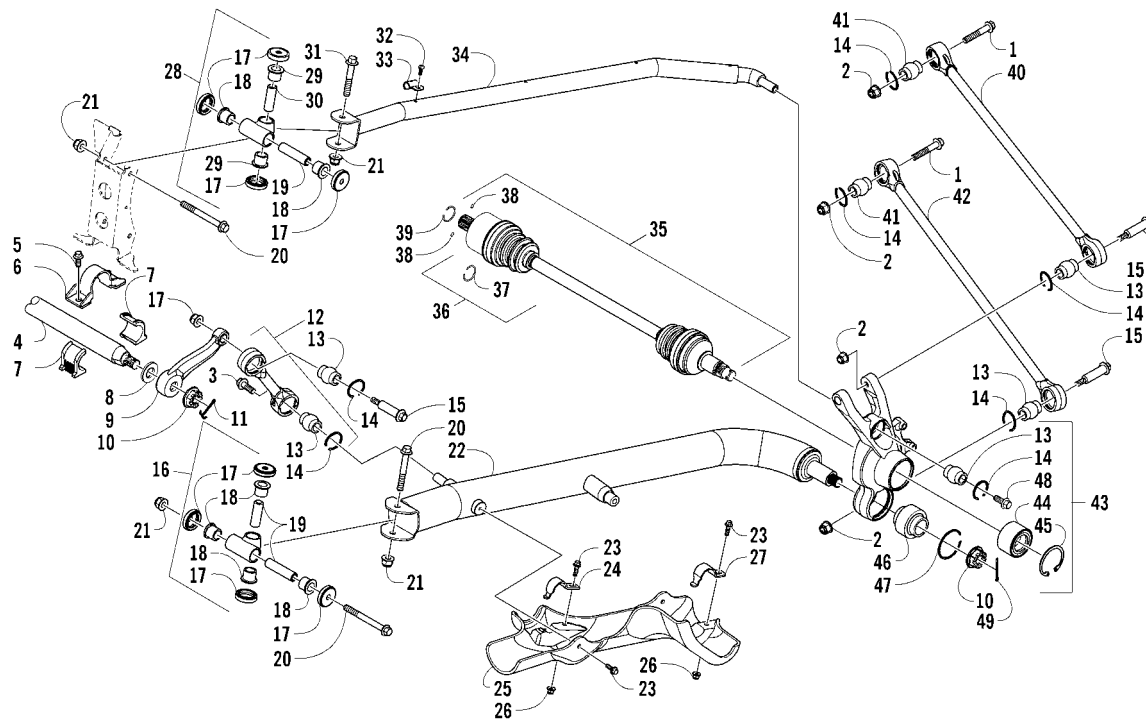
Ref	Part No.	New	Qty	Description	Ref	Part No.	New	Qty	Description
1	0505-756	X	1	● Complete Rack and Pinion Assembly (inc. 2-11)	10	0405-457	X	2	● Rod, Support
2	0405-463	X	1	● Collar, Locking	11	4506-688	X	1	● Bracket, Mounting
3	8408-872		4	● Screw, Cap	12	0623-044		4	Washer
4	0505-814	X	1	● Rack and Pinion	13	8408-818		4	Screw, Cap
5	8409-847		1	● Screw, Cap	14	0505-714		2	Tie Rod - Assembly (inc. 15-19)
6	0505-775	X	1	● Rack, Steering - Assembly (inc. 7-9)	15	0505-812	X	2	● Kit, Tie Rod End - Outer (inc. 16-17)
7	0405-414	X	1	● Pad, Felt	16	1423-072	X	4	● Nut, Castle
8	0405-445	X	4	● Bushing	17	0623-175		4	● Pin, Cotter
9	0405-461	X	4	● Seal	18	0505-811	X	2	● Kit, Tie Rod End - Inner (inc. 16-17)
					19	0405-404	X	2	● Tie Rod



FRONT SUSPENSION ASSEMBLY

0746-566

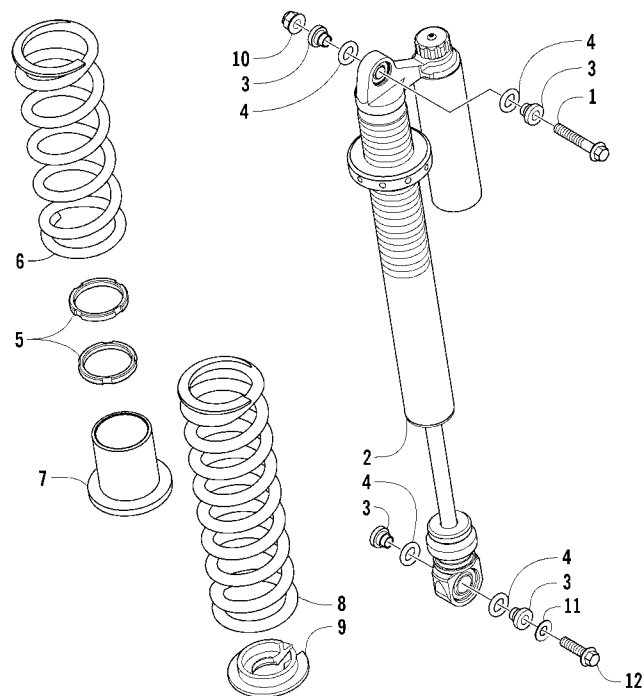
Ref	Part No.	New	Qty	Description	Ref	Part No.	New	Qty	Description
1	8409-050		4	Screw, Cap	16	8413-090		8	Screw, Cap
2	0403-251	X	2	Shock Absorber (inc. 3-4)	17	0503-521	X	1	A-Arm, Lower Right - Green (inc. 11-15) (1PUSQ/1POSQ)
3	0403-273	X	8	● O-Ring		0503-516	X	1	A-Arm, Lower Left - Green (inc. 11-15) (1PUSQ/1POSQ)
4	0403-268	X	8	● Spacer		0503-496	X	1	A-Arm, Lower Right - Black (inc. 11-15) (1PUSA/1POSA)
5	0503-503	X	2	Spring, Suspension - Upper - White		0503-497	X	1	A-Arm, Lower Left - Black (inc. 11-15) (1PUSA/1POSA)
6	0403-267	X	2	Guide, Spring	18	1502-774	X	2	Axle - Front - Locking (inc. 19-22)
7	0503-502	X	2	Spring, Suspension - Lower - White	19	1436-410		2	● Repair Kit, Boot (inc. 20)
8	0403-272	X	2	Retainer, Spring	20	1441-988		2	● Clip, Retaining
9	8428-002		12	Nut, Lock	21	1402-885		4	● Pin, Detent
10	0503-523	X	1	A-Arm, Upper Right - Green (inc. 11-15) (1PUSQ/1POSQ)	22	1402-889		2	● Clip, Retaining
	0503-518	X	1	A-Arm, Upper Left - Green (inc. 11-15) (1PUSQ/1POSQ)	23	0423-998		4	Screw, Shoulder
	0503-494	X	1	A-Arm, Upper Right - Black (inc. 11-15) (1PUSA/1POSA)	24	0503-484	X	1	Knuckle - Assembly - Right (inc. 25-26)
	0503-495	X	1	A-Arm, Upper Left - Black (inc. 11-15) (1PUSA/1POSA)		0503-485	X	1	Knuckle - Assembly - Left (inc. 25-26)
11	3313-113		16	● Seal	25	1402-809		2	● Bearing
12	0403-264	X	16	● Bushing	26	0423-423		2	● Ring, Retaining
13	0403-250	X	8	● Axle	27	0423-946		4	Screw, Self-Tapping
14	0423-009		4	● Ring, Retaining	28	0403-257	X	4	Clip, Routing
15	0405-483	X	4	● Ball Joint					



REAR SUSPENSION ASSEMBLY

0746-571

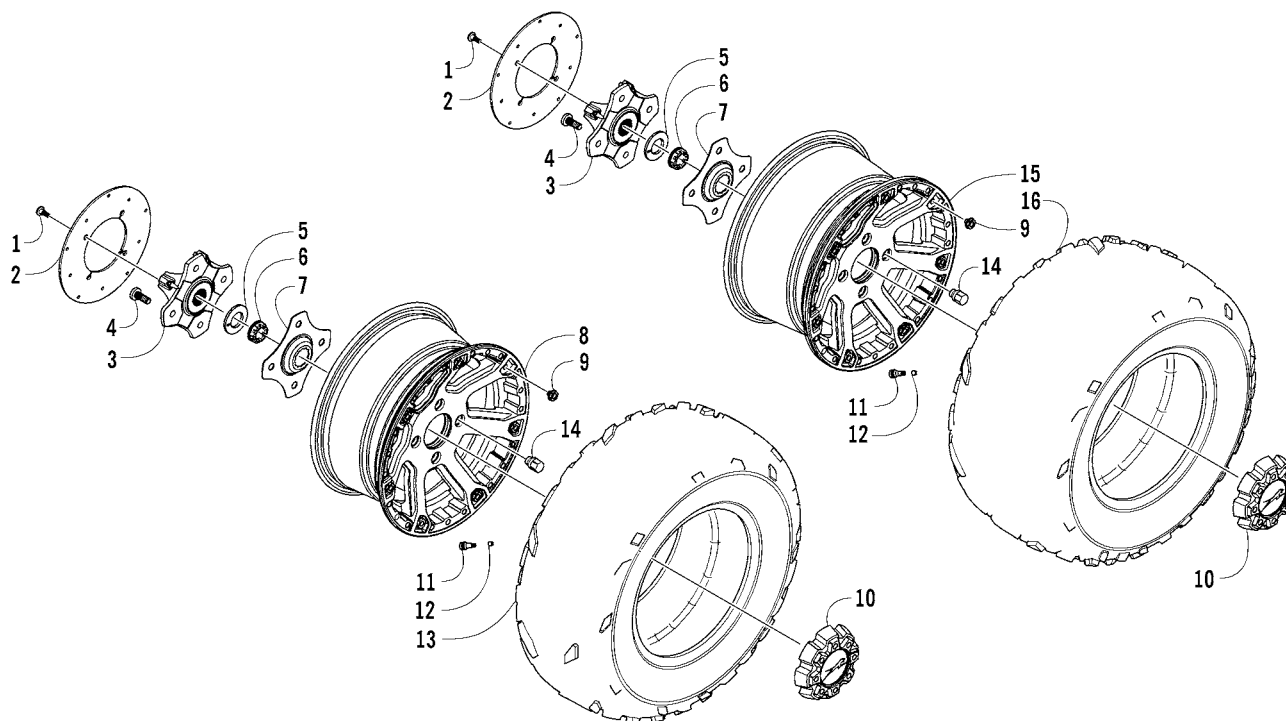
Ref	Part No.	New	Qty	Description	Ref	Part No.	New	Qty	Description
1	8409-060		6	Screw, Cap	28	0504-756	X	2	Mount, Upper Trailing Arm - Assembly (inc. 17-19 and 29-30)
2	8428-002		14	Nut, Lock	29	2402-076	X	4	● Bearing
3	8409-030		2	Screw, Cap	30	0404-289	X	2	● Axle
4	0504-708	X	1	Bar, Sway	31	8413-275		2	Screw, Cap
5	1423-150	X	4	Screw, Cap	32	0423-946		8	Screw, Self-Tapping
6	0504-724	X	2	Clamp, Retaining	33	0403-271	X	8	Clip, Routing
7	0404-246	X	4	Bushing	34	0504-692	X	2	Arm, Trailing - Upper - Green (1PUSQ/1POSQ)
8	2402-061	X	2	Washer, Thrust		0504-743	X	2	Arm, Trailing - Upper - Black (1PUSA/1POSA)
9	0504-744	X	2	Link, Sway Bar	35	1502-914	X	2	Axle, Drive (inc. 36-39)
10	0423-394		4	Nut, Castle	36	1436-410		2	● Repair Kit, Boot (inc. 37)
11	0423-407		2	Pin, Cotter	37	1441-988		2	● Clip, Retaining
12	0504-687	X	2	Link, Sway Bar - Green (inc. 13-14) (1PUSQ/1POSQ)	38	1402-885		4	● Pin, Detent
	0504-740	X	2	Link, Sway Bar - Black (inc. 13-14) (1PUSA/1POSA)	39	1402-889		2	● Clip, Retaining
13	0404-248	X	12	● Bearing	40	0504-648	X	4	Link, Suspension - Upper - Green (inc. 13-14 and 41) (1PUSQ/1POSQ)
14	1423-085	X	18	● Ring, Retaining		0504-738	X	4	Link, Suspension - Upper - Black (inc. 13-14 and 41) (1PUSA/1POSA)
15	1423-087	X	8	Screw, Shoulder	41	0404-249	X	6	● Bearing
16	0504-748	X	2	Mount, Lower Trailing Arm - Assembly (inc. 17-19)	42	0504-645	X	2	Link, Suspension - Lower - Green (inc. 13-14 and 41) (1PUSQ/1POSQ)
17	1423-159	X	16	● Seal		0504-736	X	2	Link, Suspension - Lower - Black (inc. 13-14 and 41) (1PUSA/1POSA)
18	2402-077	X	12	● Bearing	43	0504-654	X	1	Knuckle - Assembly - Right (inc. 13-14 and 44-47)
19	0404-285	X	6	● Axle		0504-655	X	1	Knuckle - Assembly - Left (inc. 13-14 and 44-47)
20	8413-200		6	Screw, Cap	44	1402-809		2	● Bearing
21	8427-202		8	Nut, Lock	45	0423-423		2	● Ring, Retaining
22	0504-690	X	2	Arm, Trailing - Lower - Green (1PUSQ/1POSQ)	46	0404-243	X	2	● Bearing
	0504-742	X	2	Arm, Trailing - Lower - Black (1PUSA/1POSA)	47	1423-086	X	2	● Ring, Retaining
23	0423-889		8	Screw, Cap	48	8409-025		2	Screw, Cap
24	0504-701	X	2	Bracket, Retaining - Front	49	1423-147	X	2	Pin, Spring
25	2416-952	X	1	Guard, Trailing Arm - Right - Black					
	2416-953	X	1	Guard, Trailing Arm - Left - Black					
26	8427-602		4	Nut, Lock					
27	0504-700	X	2	Bracket, Retaining - Rear					



REAR SUSPENSION SHOCK ASSEMBLY

0746-574

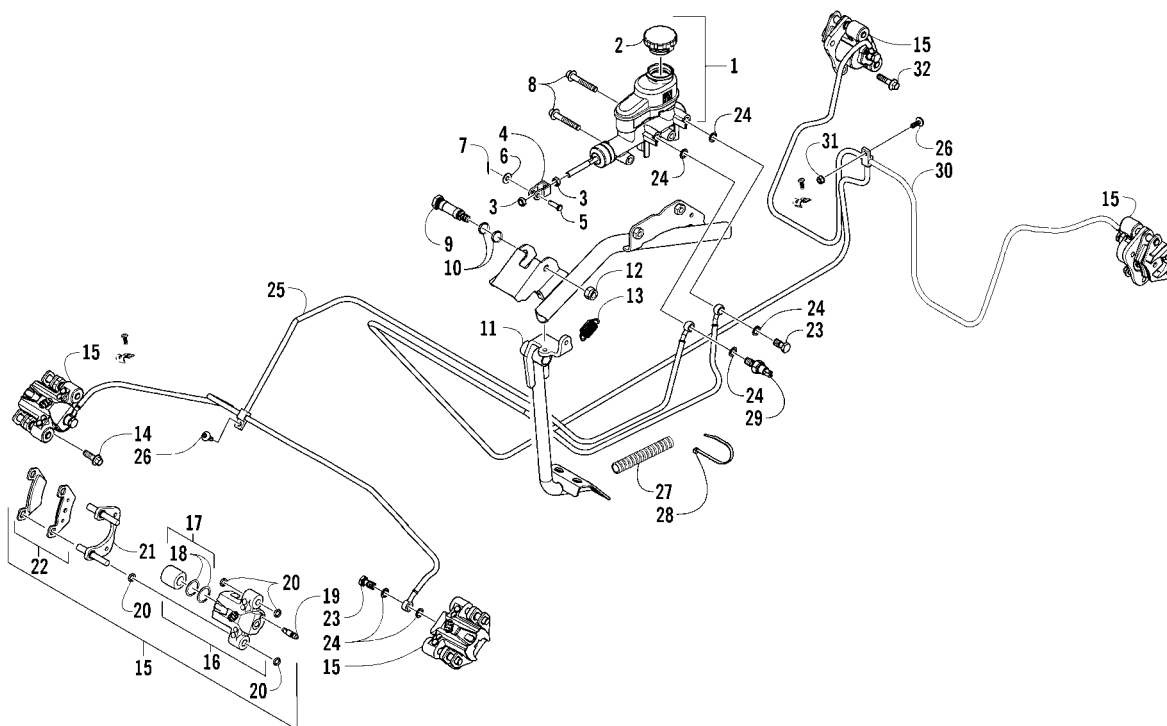
Ref	Part No.	New	Qty	Description	Ref	Part No.	New	Qty	Description
1	8409-060		2	Screw, Cap	7	0403-267	X	2	Guide, Spring
2	0404-213	X	2	Shock Absorber (inc. 3-5)	8	0504-698	X	2	Spring, Suspension - Lower - White
3	0404-264	X	8	● Spacer	9	0403-272	X	2	Retainer, Spring
4	0403-273	X	8	● O-Ring	10	8428-002		2	Nut, Lock
5	0404-275	X	2	● Collar, Locking - Adjuster Nut	11	0623-664		2	Washer
6	0504-699	X	2	Spring, Suspension - Upper - White	12	8409-030		2	Screw, Cap



WHEEL AND TIRE ASSEMBLY

0746-575

Ref	Part No.	New	Qty	Description	Ref	Part No.	New	Qty	Description
1	0423-557		16	Screw, Shoulder	9	1423-079	X	28	● Insert, Cap Screw
2	1436-807		2	Disc, Brake - Front	10	2402-003	X	4	● Cap, Wheel
	1436-808		2	Disc, Brake - Rear	11	0402-064		4	Stem, Valve (inc. 12)
3	1502-971	X	4	Hub, Wheel (inc. 4)	12	0402-140		4	● Cap, Valve Stem
4	0402-974		16	● Stud	13	1402-953	X	2	Tire - Front
5	2402-088	X	4	Washer	14	0423-618		16	Nut, Lug - Chrome
6	1423-164	X	4	Nut, Castle	15	2402-018	X	2	Wheel - Rear (inc. 9-10)
7	2402-087	X	4	Plate, Retaining	16	1402-954	X	2	Tire - Rear
8	2402-017	X	2	Wheel - Front (inc. 9-10)					

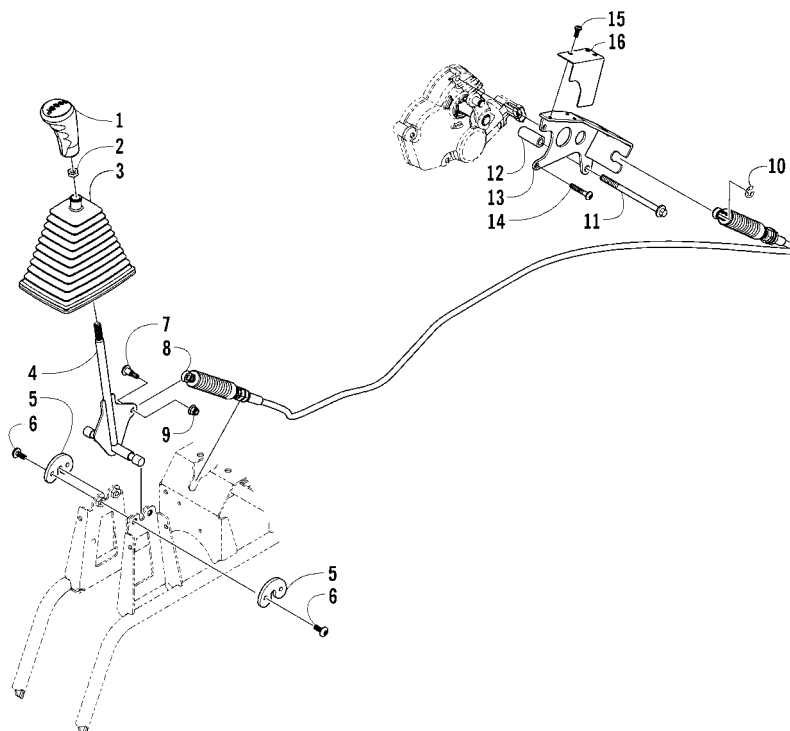


HYDRAULIC BRAKE ASSEMBLY

0746-579

Ref	Part No.	New	Qty	Description	Ref	Part No.	New	Qty	Description
1	0502-786		1	Cylinder, Master Brake - Assembly (inc. 2-4)	17	0502-606		4	●●● Piston/Seal Set (inc. 18)
2	0405-225		1	● Cap, Reservoir	18	0502-607		4	●●● Seal Set
3	0402-592		2	● Nut	19	0502-609		4	●● Valve, Bleed
4	1402-520		1	● Clevis	20	0502-608		4	● O-Ring, Guide - Set
5	1402-377		1	Pin, Clevis	21	0502-605		4	● Bracket Assembly
6	8050-217		1	Washer	22	1502-694		4	● Pad, Brake - Set
7	0117-868		1	Pin, Cotter	23	0423-413		5	Bolt, Banjo-Fitting
8	8408-850		2	Screw, Cap	24	0423-178		12	Washer, Crush
9	0402-872		1	Axle	25	1402-956	X	1	Hose, Brake - Front
10	1602-213		2	O-Ring	26	8476-616		2	Screw, Machine
11	1502-871	X	1	Lever, Brake	27	0619-776		AR	Conduit, Flexible - 5 ft
12	8422-002		1	Nut, Lock	28	0123-903		AR	Tie, Cable - 11.5 in.
13	1612-178		1	Spring	29	3313-239		1	Switch, Brake Pressure
14	8408-826		4	Screw, Cap	30	1402-955	X	1	Hose, Brake - Rear
15	1502-724		1	Caliper, Brake - Front Right (inc. 16-22)	31	0623-038		1	Nut w/Washer
	1502-725		1	Caliper, Brake - Front Left (inc. 16-22)	32	8408-831		4	Screw, Cap
	1502-725		1	Caliper, Brake - Rear Right (inc. 16-22)					
	1502-724		1	Caliper, Brake - Rear Left (inc. 16-22)					
16	1436-160		1	● Housing, Caliper - Assembly - Front Right (inc. 17-19)					
	1436-161		1	● Housing, Caliper - Assembly - Front Left (inc. 17-19)					
	1436-161		1	● Housing, Caliper - Assembly - Rear Right (inc. 17-19)					
	1436-160		1	● Housing, Caliper - Assembly - Rear Left (inc. 17-19)					

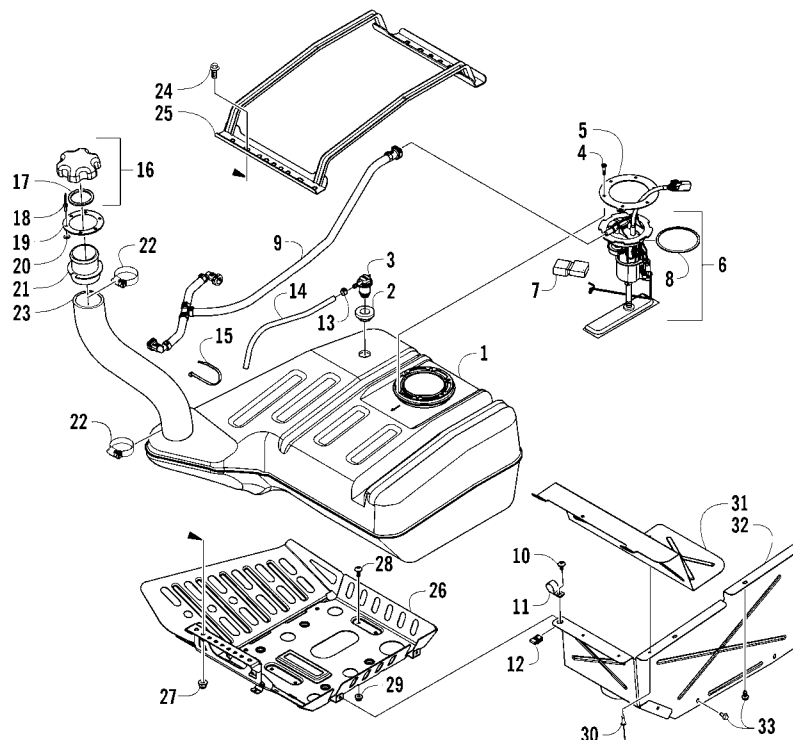
16



SHIFTER ASSEMBLY

0746-589

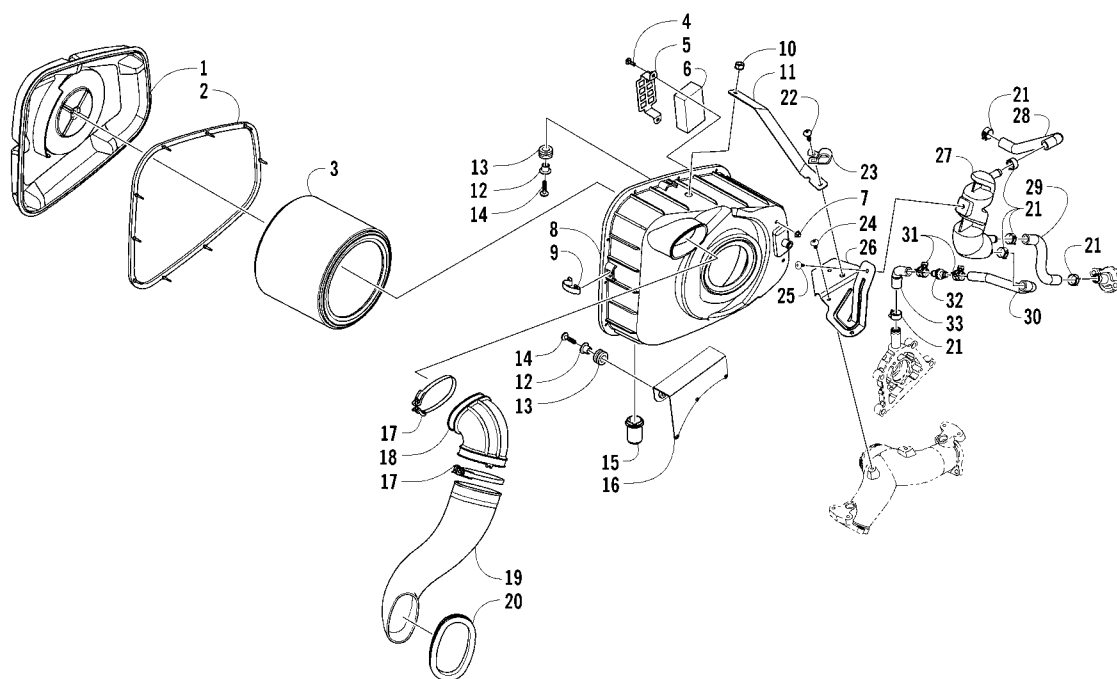
Ref	Part No.	New	Qty	Description	Ref	Part No.	New	Qty	Description
1	2402-004	X	1	Knob, Shift	9	8427-602		1	Nut, Lock
2	0423-885		1	Nut	10	0124-057		1	E-Ring
3	2416-765	X	1	Boot, Shift Lever	11	1423-135	X	1	Screw, Cap
4	1502-841	X	1	Lever, Shift	12	1423-134	X	1	Spacer
5	1402-275		2	Retainer, Shift Linkage	13	1502-843	X	1	Bracket, Shift Cable
6	0423-910		4	Screw, Machine	14	8468-635		2	Screw, Machine
7	0423-356		1	Screw, Shoulder	15	0423-946		3	Screw, Self-Tapping
8	0487-082	X	1	Cable, Shift	16	2402-064	X	1	Shield, Heat



GAS TANK ASSEMBLY

0746-591

Ref	Part No.	New	Qty	Description	Ref	Part No.	New	Qty	Description
1	0570-359	X	1	Tank, Gas - Assembly (inc. 2-4)	17	0109-733		1	● Gasket, Gas Tank Cap
2	1670-822		1	● Grommet	18	8060-628		6	Rivet
3	1670-787		1	● Valve, Check	19	0670-304		1	Plate, Retaining
4	0423-898		6	● Screw, Self-Tapping	20	0123-802		6	Washer
5	2670-042		1	● Plate, Retaining	21	0470-970	X	1	Neck, Fill
6	0570-358	X	1	Pump, Fuel - Assembly (inc. 7)	22	0624-390		2	Clamp, Hose
7	2670-235		1	● Float	23	0410-231	X	1	Hose, Gasline
8	0470-838		1	Seal	24	8408-825		4	Screw, Cap
9	0570-343	X	1	Hose, Gasline	25	0570-352	X	1	Bracket, Hold-Down
10	8476-616		1	Screw, Machine	26	0570-350	X	1	Bracket, Gas Tank
11	1623-675		2	Clamp, Routing	27	8427-805		4	Nut, Lock
12	0423-577		1	Clip, U-Nut	28	8477-616		4	Screw, Machine
13	0423-688		1	Clamp, Hose	29	8427-602		4	Nut, Lock
14	0410-070	AR		Hose, Gasline - 25 ft	30	8060-602		4	Rivet
15	0123-788	AR		Tie, Cable - 8 in.	31	0412-632	X	1	Shield, Heat - Upper
	0123-903	AR		Tie, Cable - 11.5 in.	32	0412-633	X	1	Shield, Heat - Lower
16	0470-438		1	Cap, Gas Tank (inc. 17)	33	0623-966		5	Screw, Self-Tapping

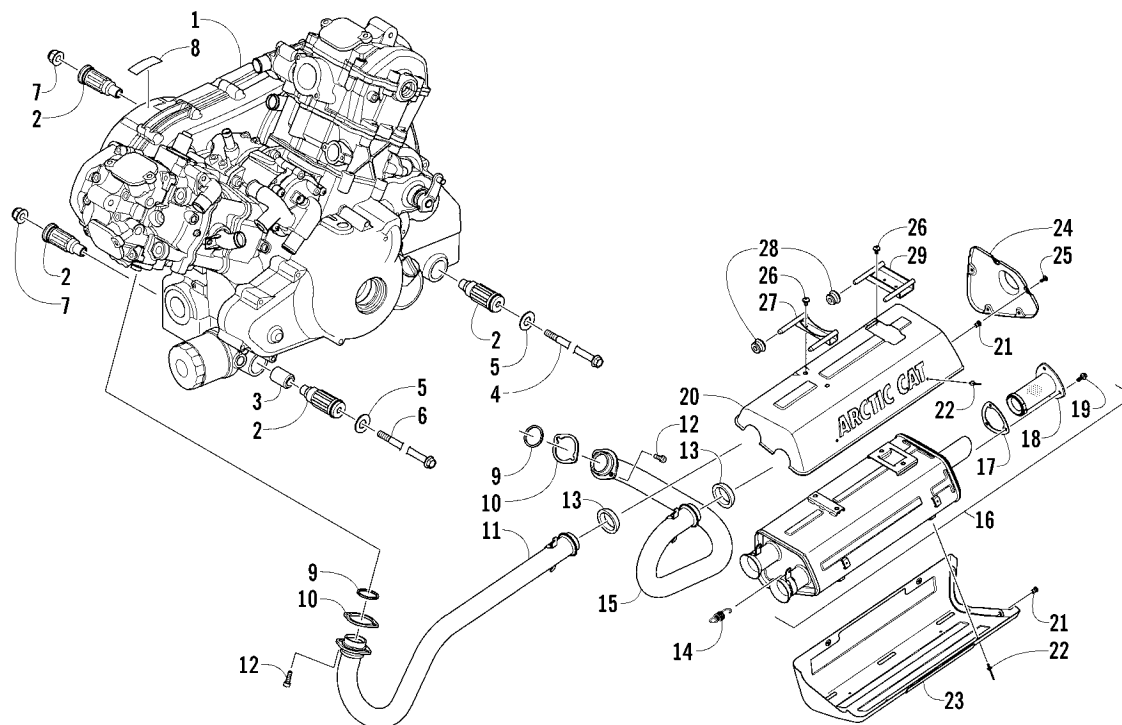


AIR INTAKE ASSEMBLY

0746-593

Ref	Part No.	New	Qty	Description	Ref	Part No.	New	Qty	Description
1	0470-936	X	1	Cover, Air Intake	18	0470-940	X	1	Boot, Air-In
2	0470-937	X	1	Gasket	19	0470-938	X	1	Duct, Intake
3	0470-942	X	1	Filter, Air	20	0470-945	X	1	Grommet
4	8477-516		2	Screw, Machine	21	0423-045		6	Clamp, Hose
5	0470-946	X	1	Bracket, Retaining - Filter	22	8476-616		1	Screw, Machine
6	0470-891	X	1	Filter	23	1623-675		1	Clamp, Routing
7	8427-502		2	Nut, Lock	24	8476-612		2	Screw, Machine
8	0570-347	X	1	Housing, Air Intake	25	0623-784		1	Screw, Self-Tapping
9	0423-455		5	Clip, Spring	26	0470-967	X	1	Bracket, Mounting - Oil Separator
10	0623-038		1	Nut w/Washer	27	0470-857		1	Separator, Oil
11	0470-977	X	1	Bracket, Support	28	0410-243	X	1	Hose, Vent
12	0423-669		3	Spacer	29	0410-258	X	1	Hose, Vent
13	0423-465		3	Grommet	30	0410-245	X	1	Hose, Vent
14	8476-625		3	Screw, Machine	31	1623-281		2	Clamp, Hose
15	0470-947	X	1	Valve, Drain	32	0470-943	X	1	Valve, Check
16	0470-939	X	1	Bracket, Mounting - Air Intake	33	0410-244	X	1	Hose, Vent
17	0423-730		2	Clamp					

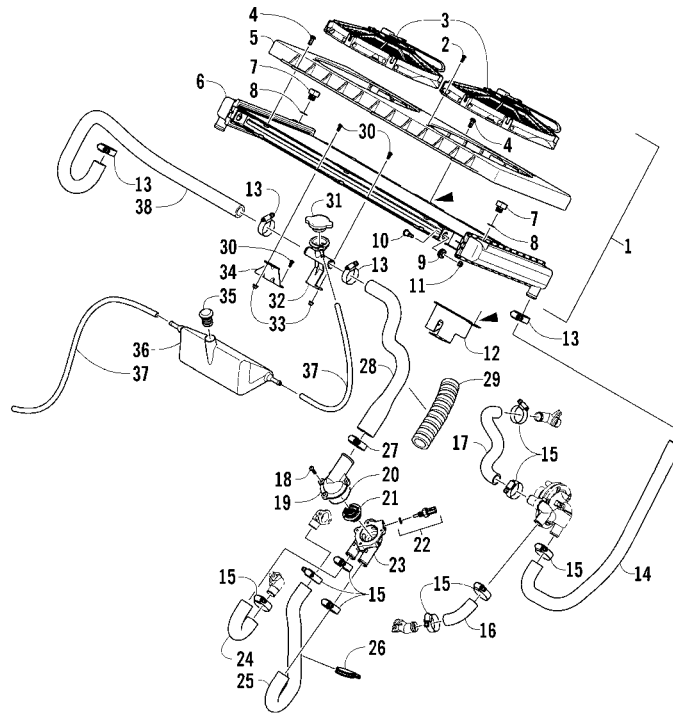
20



ENGINE AND EXHAUST

0746-590

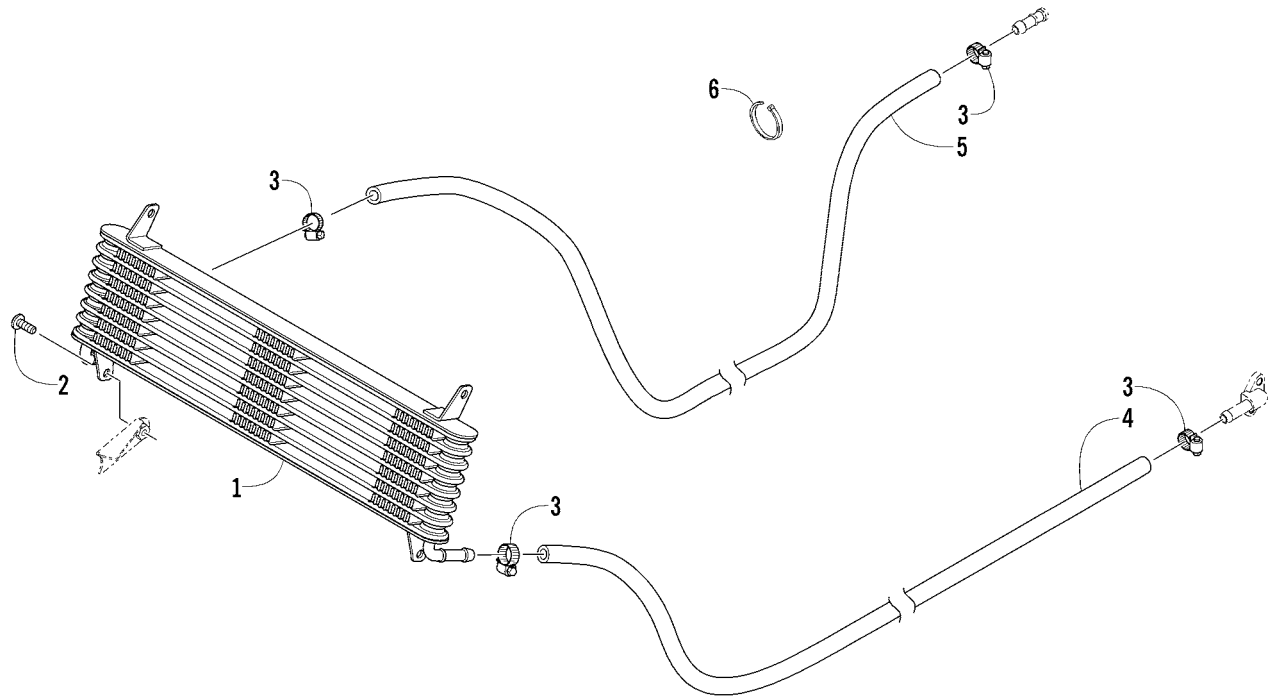
Ref	Part No.	New	Qty	Description	Ref	Part No.	New	Qty	Description
1	0800-113	X	1	Engine, A950L (inc. 2-3)	16	0512-599	X	1	Muffler - Assembly (inc. 17-19)
2	0801-091		4	● Mount, Engine	17	0412-614	X	1	● Gasket, Spark Arrester
3	0801-128		1	● Spacer, Engine Mount	18	0512-585	X	1	● Arrester, Spark - Assembly
4	0423-451		1	Screw, Cap	19	8408-616		3	● Screw, Cap
5	0423-426		2	Washer	20	0512-590	X	1	Shield, Heat - Upper (inc. 21)
6	0423-734		1	Screw, Cap	21	1623-797		5	● Insert
7	8428-002		2	Nut, Lock	22	8061-283		8	Rivet
8	0411-426		1	Decal, Warning - Clutch Cover	23	0512-591	X	1	Shield, Heat - Lower (inc. 21)
9	0412-338		2	Gasket, Exhaust Pipe	24	0412-591	X	1	Shield, Heat - Rear
10	0412-636	X	2	Spacer, Exhaust Pipe	25	8470-512		5	Screw, Machine
11	0512-588	X	1	Pipe, Exhaust - Front	26	8476-612		4	Screw, Machine
12	1423-084	X	4	Screw, Cap	27	0412-553		1	Bracket, Muffler Support
13	0412-375		2	Seal, Exhaust Pipe	28	0412-544		4	Bushing
14	0612-668		4	Spring, Extension	29	0412-641	X	1	Bracket, Muffler Support
15	0512-589	X	1	Pipe, Exhaust - Rear					



COOLING ASSEMBLY

0746-588

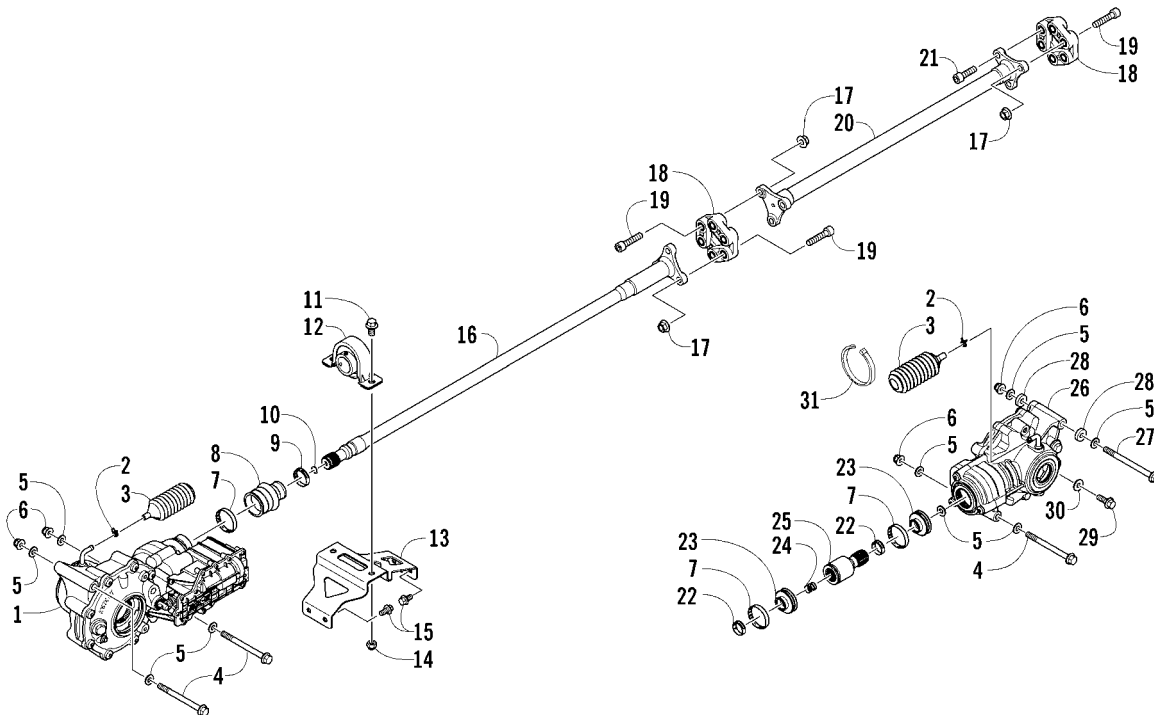
Ref	Part No.	New	Qty	Description	Ref	Part No.	New	Qty	Description
1	0413-278	X	1	Radiator Assembly (inc. 2-9)	20	0830-173		1	O-Ring
2	8470-510		8	● Screw, Machine	21	0808-093		1	Thermostat
3	0413-123		2	● Fan, Cooling	22	0808-124		1	Sensor, Engine Coolant Temperature
4	8009-549		6	● Screw, Machine	23	0808-189		1	Housing, Thermostat
5	0413-292	X	1	● Shroud, Fan	24	0410-191		1	Hose, Coolant - Front Cylinder Head/Thermostat
6	0413-293	X	1	● Radiator	25	0410-253	X	1	Hose, Coolant - Rear Cylinder Head/Thermostat
7	0413-195		2	● Plug, Drain	26	0623-761		1	Clamp
8	1602-213		2	● O-Ring	27	1623-093		1	Clamp, Hose
9	0423-030		4	● Grommet	28	0410-239	X	1	Hose, Coolant - Thermostat/Filler Neck
10	0423-484		4	Screw, Shoulder	29	1619-038		1	Conduit, Flexible
11	0623-038		4	Nut w/Washer	30	8475-512		6	Screw, Machine
12	2416-966	X	1	Bracket, Mounting - Coil	31	0413-255		1	Cap, Radiator
13	0423-490		4	Clamp, Hose	32	0413-280	X	1	Neck, Filler
14	0410-238	X	1	Hose, Coolant - Radiator/Water Pump	33	8427-502		4	Nut, Lock
15	0423-496		9	Clamp, Hose	34	2416-976	X	1	Bracket, Mounting - Overflow Bottle
16	0410-115		1	Hose, Coolant - Water Pump/Front Cylinder	35	0413-087		1	Plug
17	0410-116		1	Hose, Coolant - Water Pump/Rear Cylinder	36	0413-300	X	1	Bottle, Overflow
18	8470-520		4	Screw, Machine	37	0610-011		AR	Hose - 25 ft
19	0808-092		1	Cover, Thermostat	38	0410-237	X	1	Hose, Coolant - Filler Neck/Radiator



OIL COOLER ASSEMBLY

0746-578

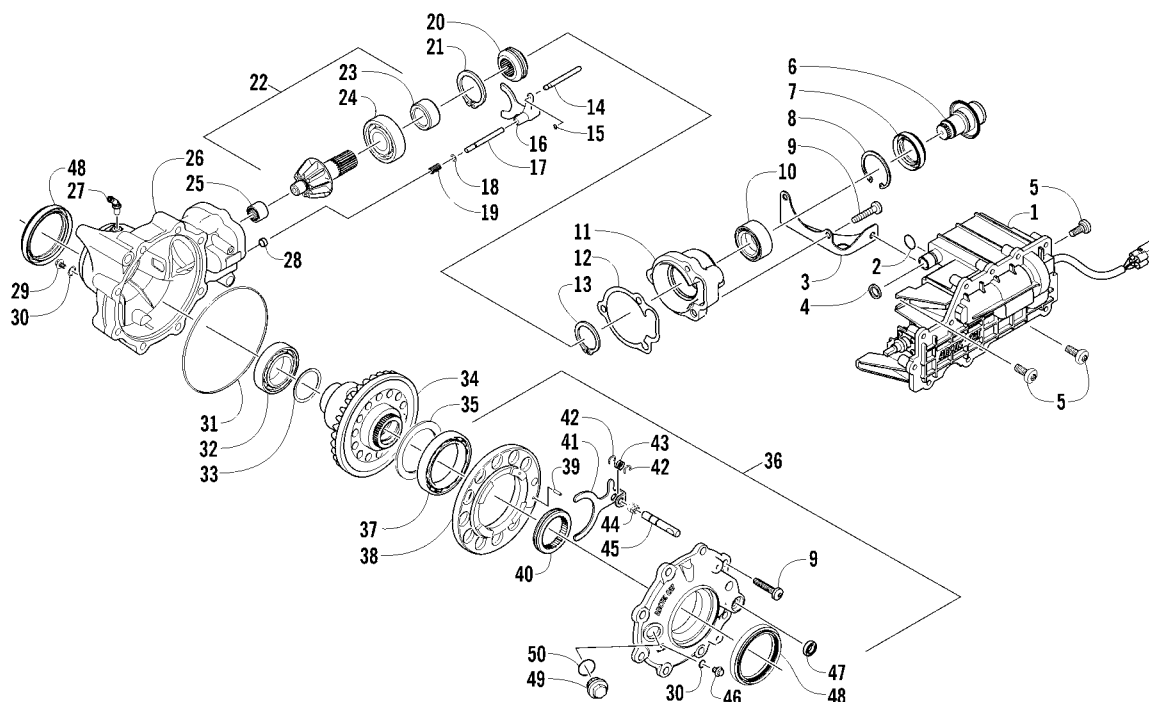
0410-240									
Ref	Part No.	New	Qty	Description	Ref	Part No.	New	Qty	Description
1	0413-241		1	Cooler, Oil	4	0410-240	X	1	Hose, Oil Cooler - In
2	8476-616		3	Screw, Machine	5	0410-241	X	1	Hose, Oil Cooler - Out
3	0423-632		4	Clamp, Hose	6	0123-903		AR	Tie, Cable - 11.5 in.



DRIVE TRAIN ASSEMBLY

0746-577

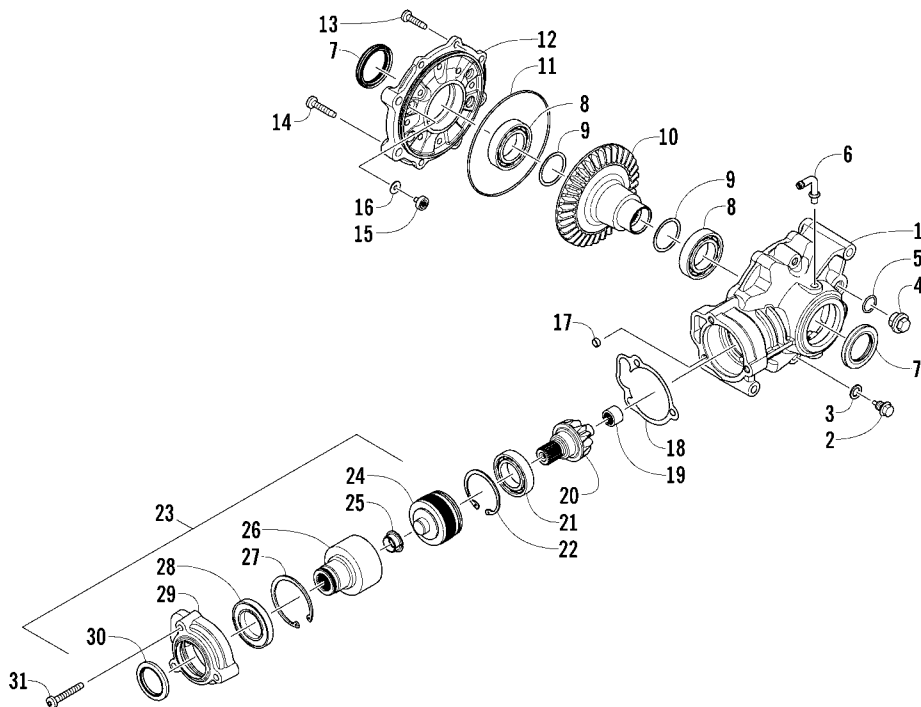
Ref	Part No.	New	Qty	Description	Ref	Part No.	New	Qty	Description
1	1502-854	X	1	Gearcase, Front	17	8424-002		9	Nut
2	0423-315		2	Clamp, Hose	18	2402-062	X	2	Isolator, Driveshaft
3	1402-620		2	Bladder, Gearcase	19	1423-094	X	9	Screw, Cap
4	0423-404		3	Screw, Cap	20	2402-056	X	1	Driveshaft, Center
5	0423-426		9	Washer	21	1423-093	X	3	Screw, Cap
6	8428-002		4	Nut, Lock	22	1423-061	X	2	Clamp
7	0423-393		3	Clamp	23	1402-951	X	2	Boot
8	0402-985		1	Boot, Shaft	24	1402-026		1	Spring
9	0423-411		1	Clamp	25	2402-019	X	1	Driveshaft, Rear
10	1423-090	X	1	O-Ring	26	1502-822	X	1	Gearcase, Rear
11	8408-020		2	Screw, Cap	27	0423-576		1	Screw, Cap
12	1402-968	X	1	Bearing Assembly	28	1423-062	X	2	Spacer
13	4506-725	X	1	Bracket, Mounting - Bearing Assembly	29	8408-826		1	Screw, Cap
14	8422-002		2	Nut, Lock	30	8050-252		1	Washer
15	8408-816		4	Screw, Cap	31	0123-788		AR	Tie, Cable - 8 in.
16	2402-058	X	1	Driveshaft, Front					



FRONT DRIVE GEARCASE ASSEMBLY

0746-055

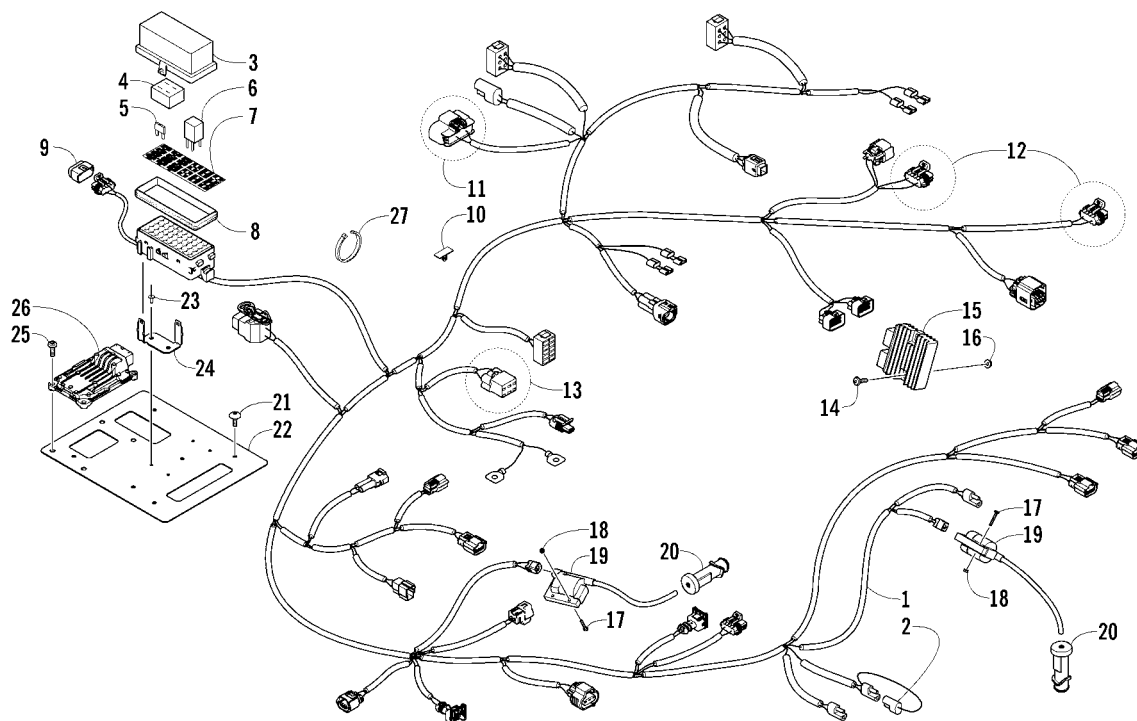
Ref	Part No.	New	Qty	Description	Ref	Part No.	New	Qty	Description
-	1502-854	X	1	Complete Front Drive Gearcase Assembly	29	1402-210		1	Plug, Magnetic (inc. one No. 30)
1	1502-909	X	1	Actuator (inc. 2)	30	0423-153		2	● O-Ring
2	1402-981		1	● O-Ring	31	0423-149		1	O-Ring
3	1502-237		1	Bracket, Actuator	32	0402-393		1	Bearing
4	0423-892		1	O-Ring	33	0402-405		AR	Shim, 41 x 49 x 1.3 mm
5	0423-396		3	Screw, Self-Tapping		0402-406		AR	Shim, 41 x 49 x 1.4 mm
6	1502-085		1	Shaft, Input		0402-407		AR	Shim, 41 x 49 x 1.5 mm
7	1402-011		1	Seal		0402-408		AR	Shim, 41 x 49 x 1.6 mm
8	0423-423		1	Ring, Retaining		0402-409		AR	Shim, 41 x 49 x 1.7 mm
9	0423-118		11	Screw, Self-Tapping	34	1502-919	X	1	Gear, Ring - 34T
10	1402-043		1	Bearing	35	1402-074		AR	Shim, 61 x 69 x 1.3 mm
11	0502-528		1	Housing, Pinion		1402-075		AR	Shim, 61 x 69 x 1.4 mm
12	0402-947		1	Gasket, Flange		1402-076		AR	Shim, 61 x 69 x 1.5 mm
13	0423-417		1	Ring, Retaining		1402-077		AR	Shim, 61 x 69 x 1.6 mm
14	0402-997		1	Shaft, Selector		1402-078		AR	Shim, 61 x 69 x 1.7 mm
15	0423-402		1	Ring, Retaining	36	1502-858	X	1	Cover, Gearcase (inc. one No. 30, 37-47, and one No. 48)
16	0402-998		1	Fork, Selector	37	1402-053		1	● Bearing
17	0402-417		1	Shaft, Shuttle	38	0502-413		1	● Flange, Bearing
18	0423-147		1	O-Ring	39	1402-079		1	● Pin, Parallel
19	0402-999		1	Spring, Return	40	1402-042		1	● Collar, Sliding
20	0402-413		1	Coupler, Drive	41	1402-054		1	● Fork
21	1423-067	X	1	Ring, Retaining	42	1402-058		2	● Ring, Retaining
22	1502-851	X	1	Gear, Pinion - Assembly - 11T (inc. 23-24)	43	1402-057		1	● Spring
23	1402-977	X	1	● Collar, Retaining	44	1402-063		1	● Spring
24	0402-327		1	● Bearing	45	1402-656		1	● Shaft, Lock
25	0402-328		1	Bearing	46	1402-211		1	● Plug, Oil Level (inc. one No. 30)
26	1502-856	X	1	Housing, Gearcase	47	1402-056		1	● Seal
27	1402-442		1	Fitting, Elbow	48	1402-930	X	2	● Seal
28	0402-411		1	Pin, Dowel	49	0402-333		1	Plug, Fill (inc. 50)
					50	0423-154		1	● O-Ring



REAR DRIVE GEARCASE ASSEMBLY

0746-576

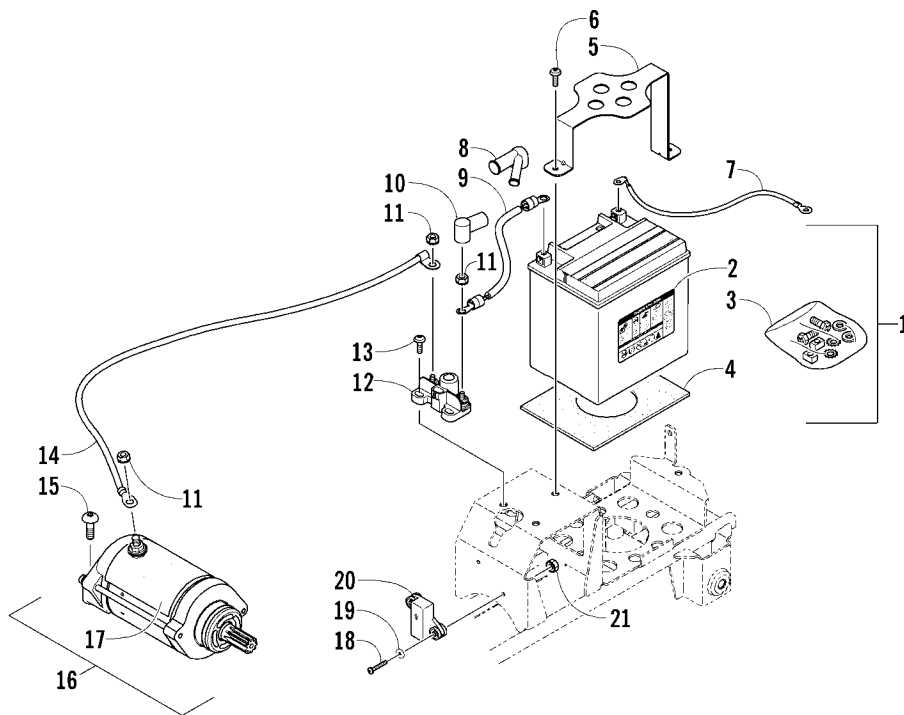
Ref	Part No.	New	Qty	Description	Ref	Part No.	New	Qty	Description
-	1502-822	X	1	Complete Rear Drive Gearcase Assembly	16	0402-429	AR		Shim, 6.3 x 18 x 1.3 mm
1	1502-921	X	1	Housing, Gearcase		0402-430	AR		Shim, 6.3 x 18 x 1.4 mm
2	2402-043	X	1	Plug, Drain - Magnetic		0402-431	AR		Shim, 6.3 x 18 x 1.5 mm
3	2402-044	X	1	Washer		0402-432	AR		Shim, 6.3 x 18 x 1.6 mm
4	0402-333		1	Plug, Fill (inc. 5)		0402-433	AR		Shim, 6.3 x 18 x 1.7 mm
5	0423-154		1	● O-Ring	17	0402-411		1	Pin, Dowel
6	1402-442		1	Fitting, Elbow	18	0402-947		1	Gasket
7	2402-040	X	2	Seal	19	0402-328		1	Bearing
8	2402-042	X	2	Bearing	20	2402-037	X	1	Gear, Pinion - Assembly - 11T
9	0402-405	AR		Shim, 41 x 49 x 1.3 mm	21	0402-324		1	Bearing
	0402-406	AR		Shim, 41 x 49 x 1.4 mm	22	1423-067	X	1	Ring, Retaining
	0402-407	AR		Shim, 41 x 49 x 1.5 mm	23	1502-833	X	1	Shaft, Input (inc. 24-30)
	0402-408	AR		Shim, 41 x 49 x 1.6 mm	24	1502-845	X	1	● Cartridge, Clutch - Assembly
	0402-409	AR		Shim, 41 x 49 x 1.7 mm	25	1402-966	X	1	● Bearing, Flange
10	2402-035	X	1	Gear, Ring - 34T	26	1402-965	X	1	● Basket, Clutch
11	0423-149		1	O-Ring	27	0423-798		1	● Ring, Retaining
12	1502-922	X	1	Cover, Gearcase	28	1402-677		1	● Bearing
13	0423-118		6	Screw, Self-Tapping	29	1502-838	X	1	● Housing, Input
14	0423-115		2	Screw, Self-Tapping	30	0402-089		1	● Seal
15	0402-326		1	Button, Thrust	31	1423-065	X	3	Screw, Self-Tapping



WIRING HARNESS ASSEMBLY

0746-573

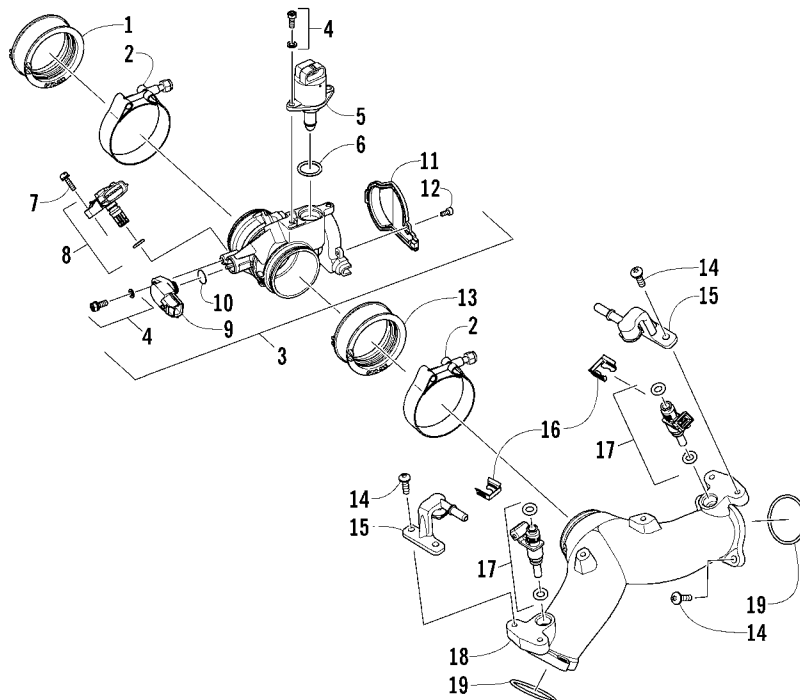
Ref	Part No.	New	Qty	Description	Ref	Part No.	New	Qty	Description
1	0486-441	X	1	Harness, Main (inc. 2-10)	14	8476-625		2	Screw, Machine
2	0486-164		1	● Tether, Accessory Connector	15	0824-072	X	1	Regulator, Voltage
3	0430-085		1	● Cover, Fuse Block	16	0623-038		2	Nut w/Washer
4	0430-037		1	● Holder, Fuse	17	8468-425		4	Screw, Machine
5	0430-032		7	● Fuse - 10 Amp	18	0423-493		4	Nut w/Washer
	0430-031		4	● Fuse - 15 Amp	19	0824-071	X	2	Coil, Ignition - Assembly (inc. 20)
	0430-030		4	● Fuse - 30 Amp	20	0824-049		2	● Cap, Spark Plug
6	0430-045		6	● Relay (4-Pin) - 20 Amp	21	0623-784		4	Screw, Self-Tapping
7	2411-883	X	1	● Decal, Fuse Block	22	4506-731	X	1	Tray, Electrical
8	0430-086		1	● Seal	23	8060-686		2	Rivet
9	0430-103	X	1	● Cover, Diagnostics Connector	24	0745-388	X	1	Bracket, Mounting - PDM
10	0430-102	X	AR	● Clip, Routing	25	8476-620		4	Screw, Machine
11	1436-415		1	Repair Kit, Connector - LCD Gauge	26	0530-064	X	1	ECM
12	1436-487	X	AR	Repair Kit, Connector - Headlight	27	0123-788		AR	Tie, Cable - 8 in.
13	1436-416		1	Repair Kit, Connector - Tilt Sensor		0123-903		AR	Tie, Cable - 11.5 in.



BATTERY AND STARTER MOTOR ASSEMBLY

0746-572

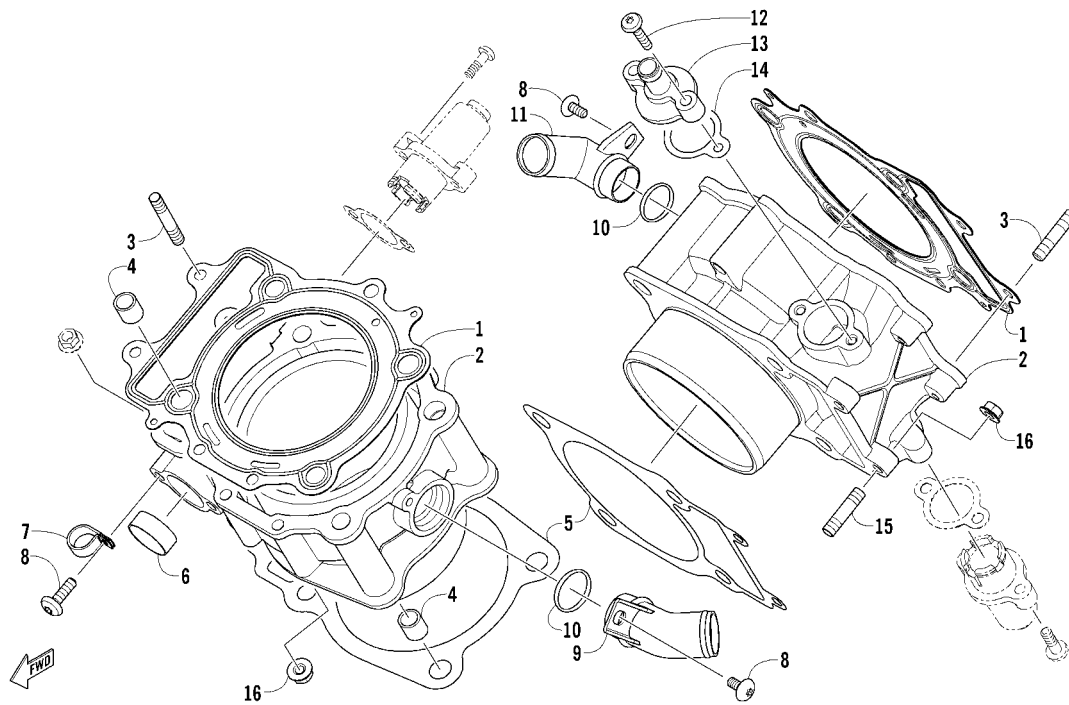
Ref	Part No.	New	Qty	Description	Ref	Part No.	New	Qty	Description
1	0645-398	X	1	Battery (inc. 2-3)	12	0445-092	X	1	Solenoid
2	0645-430		1	● Decal, Warning	13	8476-620		2	Screw, Machine
3	0445-082		1	● Kit, Hardware	14	0445-093	X	1	Cable, Solenoid/Starter
4	0417-022	X	1	Pad, Battery	15	8476-625		2	Screw, Machine
5	4506-730	X	1	Hold-Down, Battery	16	0825-023	X	1	Motor, Starter - Assembly (inc. 17)
6	8476-616		2	Screw, Machine	17	0412-629	X	1	● Foil, Protective
7	0445-090	X	1	Cable, Battery/Ground	18	8468-425		2	Screw, Machine
8	0645-019		1	Boot, Terminal - Dual	19	0123-802		2	Washer
9	0445-062		1	Cable, Battery/Solenoid	20	0409-064		1	Sensor, Tilt
10	0645-067		1	Boot, Terminal	21	0423-493		2	Nut w/Washer
11	0623-038		3	Nut w/Washer					



THROTTLE BODY ASSEMBLY

0746-580

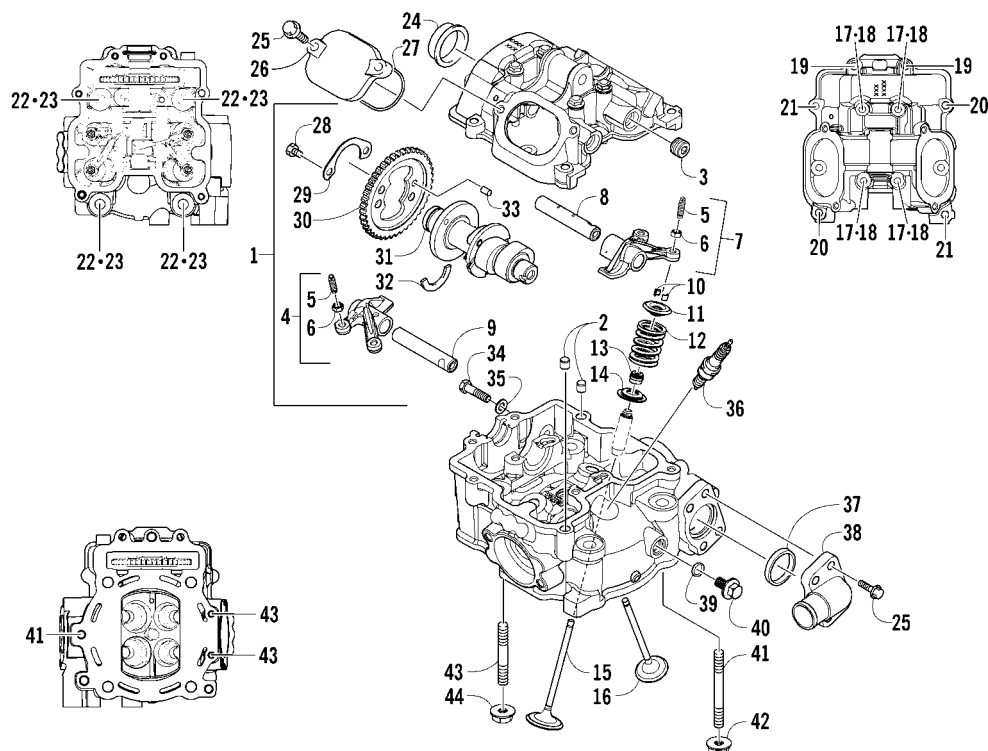
Ref	Part No.	New	Qty	Description	Ref	Part No.	New	Qty	Description
1	0470-932	X	1	Boot, Intake	11	0470-961	X	1	● Cover
2	1423-041	X	2	Clamp	12	1423-095	X	1	● Screw, Cap
3	0570-336	X	1	Throttle Body - Assembly (inc. 4-12)	13	0470-933	X	1	Boot, Intake
4	1423-081	X	3	● Screw, Cap	14	8468-620		8	Screw, Machine
5	0824-054		1	● Valve, Bypass - Idle Air	15	0470-885		2	Rail, Fuel
6	0832-088		1	● Seal	16	0470-889		2	Clip, Retaining
7	1423-080	X	1	● Screw, Machine	17	0470-910	X	2	Injector, Fuel
8	0824-052		1	● Sensor, MAP	18	0570-345	X	1	Manifold, Intake
9	0824-067	X	1	● Sensor, Throttle Position	19	0830-090		2	O-Ring
10	3306-150		1	● O-Ring					



CYLINDER ASSEMBLY

0746-581

Ref	Part No.	New	Qty	Description	Ref	Part No.	New	Qty	Description
1	0830-209		2	Gasket, Head	9	0804-046		1	Union, Coolant Hose
2	0804-031		2	Cylinder	10	0830-007		2	O-Ring
3	0827-002		4	Bolt, Stud	11	0804-030		1	Union, Coolant Hose
4	0829-002		8	Pin, Dowel	12	8468-620		2	Screw, Machine
5	0830-193		2	Gasket, Base	13	0801-174		1	Cover, Breather
6	0804-037		1	Plug, Cylinder	14	0830-134		1	Gasket
7	1623-675		1	Clamp, Routing	15	0827-018		4	Bolt, Stud
8	8468-612		3	Screw, Machine	16	8424-604		8	Nut



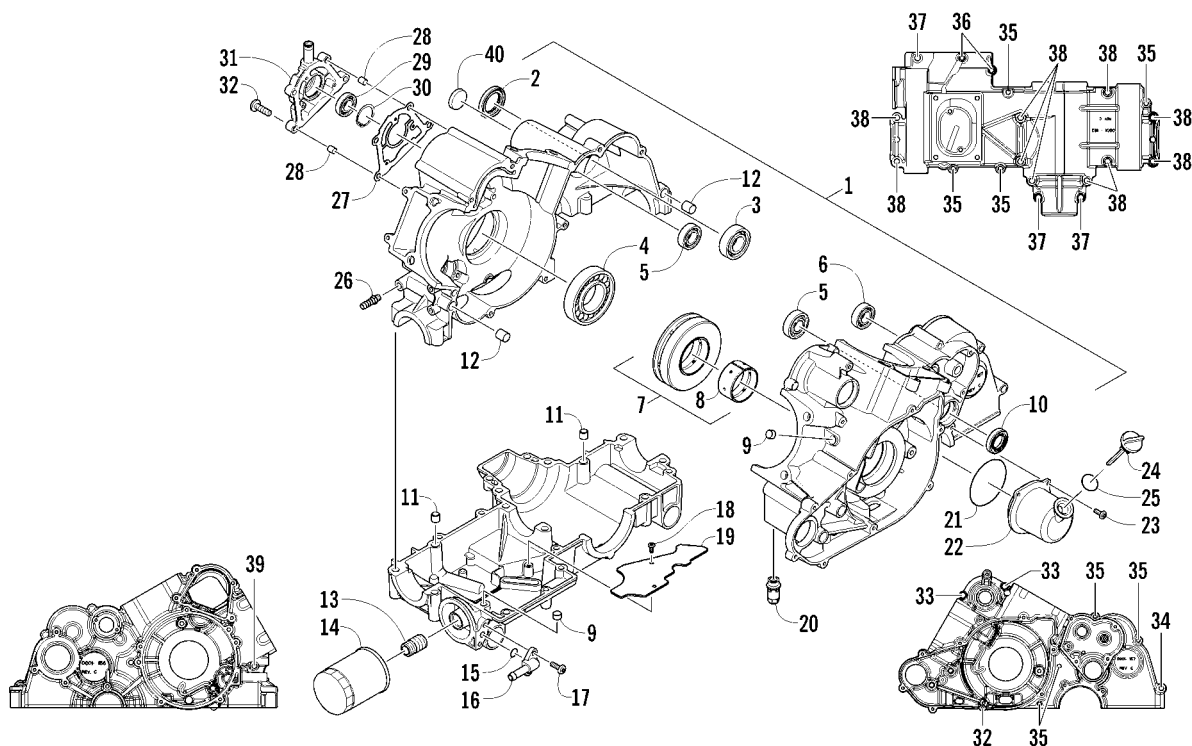
CYLINDER HEAD AND CAMSHAFT/VALVE ASSEMBLY

0746-582

Ref	Part No.	New	Qty	Description	Ref	Part No.	New	Qty	Description
1	0808-175		2	Head, Cylinder - Assembly (inc. 2-17)	23	0830-147		8	Washer
2	0829-048		4	● Pin, Dowel	24	0808-077		2	Plug, Cylinder Head
3	0831-092	X	4	● Plug, Shaft	25	0826-007		12	Screw, Cap
4	0809-237		2	● Arm, Valve Rocker - Exhaust (inc. two No. 5-6)	26	0808-003		4	Cap, Inspection
5	0809-240		8	●● Screw, Adjuster	27	0830-167		4	O-Ring
6	0827-059		8	●● Nut	28	0826-034		4	Screw, Cap
7	0809-234		2	● Arm, Valve Rocker - Intake (inc. two No. 5-6)	29	0828-004		2	Plate, Retainer
8	0809-241		2	● Shaft, Rocker Arm - Intake	30	0809-212	X	2	Sprocket
9	0809-242		2	● Shaft, Rocker Arm - Exhaust	31	0809-246		1	Camshaft, Front Cylinder
10	0809-233		16	● Cotter, Valve	32	0809-003		2	C-Ring
11	0809-232		8	● Retainer, Spring	33	0829-049		2	Pin, Dowel
12	0809-231		8	● Spring, Valve	34	8400-812		2	Screw, Cap
13	0830-186		8	● Seal, Oil	35	0830-025		2	Washer, Crush
14	0809-230		8	● Seat, Spring - Valve	36	0217-799		2	Spark Plug - CPR8E
15	0809-228		4	● Valve, Intake	37	0830-120		2	Seal
16	0809-229		4	● Valve, Exhaust	38	0808-210	X	2	Cover, Thermostat
17	0826-149		8	● Screw, Cap	39	0830-213		2	O-Ring
18	0830-155		8	Gasket	40	0826-157		2	Screw, Cap
19	0826-002		4	Screw, Cap	41	0827-062		2	Bolt, Stud
20	0826-005		4	Screw, Cap	42	8424-804		2	Nut
21	0826-006		4	Screw, Cap	43	0827-030		4	Bolt, Stud
22	0808-090		8	Screw, Cap	44	8424-604		4	Nut



Ref	Part No.	New	Qty	Description	Ref	Part No.	New	Qty	Description
1	0810-001		2	Chain, Cam	6	0830-134		2	Gasket
2	0810-069	X	2	Guide, Chain	7	8468-620		4	Screw, Machine
3	0810-070	X	2	Tensioner, Chain	8	8400-610		2	Screw, Cap
4	0826-106		2	Pivot, Tensioner	9	0828-129		2	Washer
5	0810-004		2	Adjuster, Tensioner - Assembly					

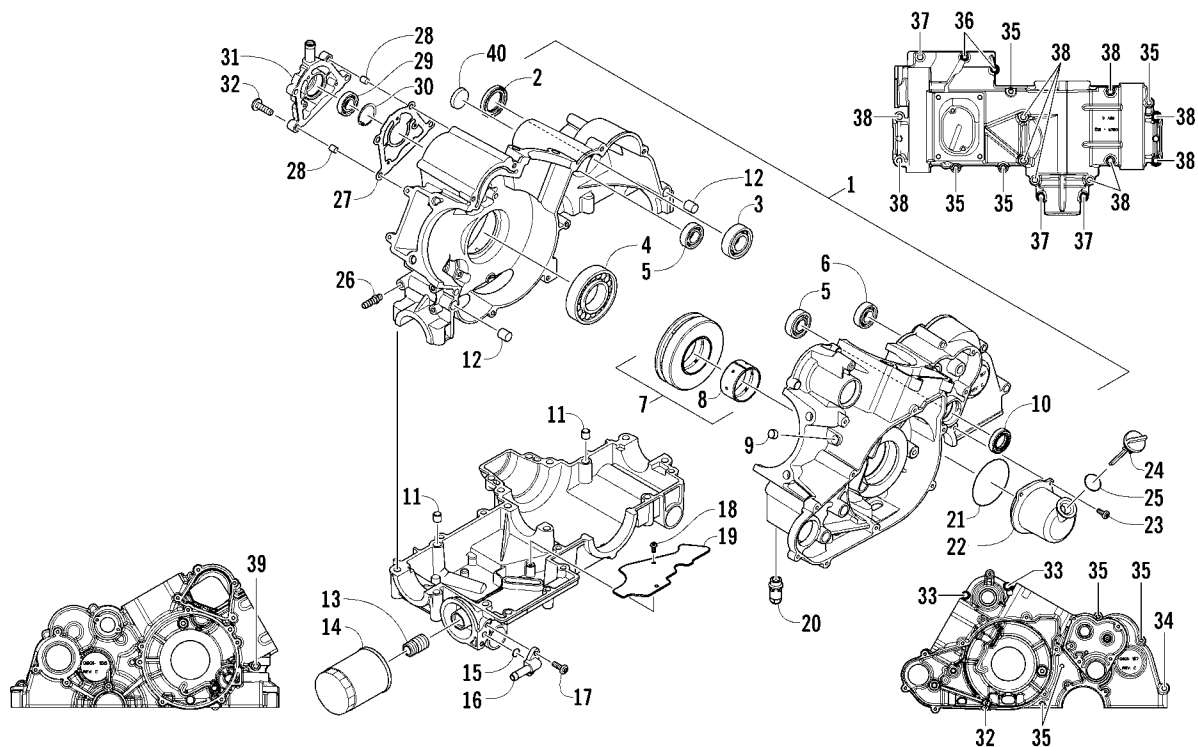


CRANKCASE ASSEMBLY

(Engine Serial No. Up to 2010689)

0745-063

Ref	Part No.	New	Qty	Description	Ref	Part No.	New	Qty	Description
1	0801-172	1	1	Crankcase - Assembly (inc. 2-13)	21	0830-162	1	1	O-Ring, Oil Filler Cover
2	0830-035	1	1	● Seal, Driveshaft	22	0812-081	1	1	Cover, Oil Filler
3	0832-048	1	1	● Bearing	23	8468-616	3	3	Screw, Machine
4	0832-042	1	1	● Bearing	24	0801-073	1	1	Stick, Oil Level
5	0832-050	2	2	● Bearing	25	0830-010	1	1	O-Ring
6	0832-049	1	1	● Bearing	26	0812-078	1	1	Fitting, Oil - Threaded
7	0832-055	1	1	● Bearing - Assembly (inc. 8)	27	0830-191	1	1	Gasket, Breather
8	0832-057	1	1	● Bearing	28	0829-048	2	2	Pin, Dowel
9	0801-002	2	2	● Plug, Engine Case	29	0832-084	1	1	Bearing
10	0822-052	1	1	● Seal, Countershaft - Right	30	0831-086	1	1	Circlip
11	0829-003	2	2	● Pin, Dowel	31	0801-193	1	1	Cover, Breather
12	0829-002	2	2	● Pin, Dowel	32	8468-625	5	5	Screw, Machine
13	0812-008	1	1	● Union, Oil Filter	33	8468-630	2	2	Screw, Machine
14	0812-029	1	1	Filter, Oil	34	8412-875	1	1	Screw, Cap
15	0830-172	1	1	O-Ring	35	8468-660	8	8	Screw, Machine
16	0812-060	1	1	Fitting, Oil	36	8468-640	2	2	Screw, Machine
17	8468-616	2	2	Screw, Machine	37	8412-830	3	3	Screw, Cap
18	0623-914	2	2	Screw, Self-Tapping	38	8412-860	10	10	Screw, Cap
19	0812-079	1	1	Plate, Oil Sump	39	8412-850	1	1	Screw, Cap
20	0812-052	1	1	Valve, Oil-Relief - Assembly	40	0818-103	1	1	Plug

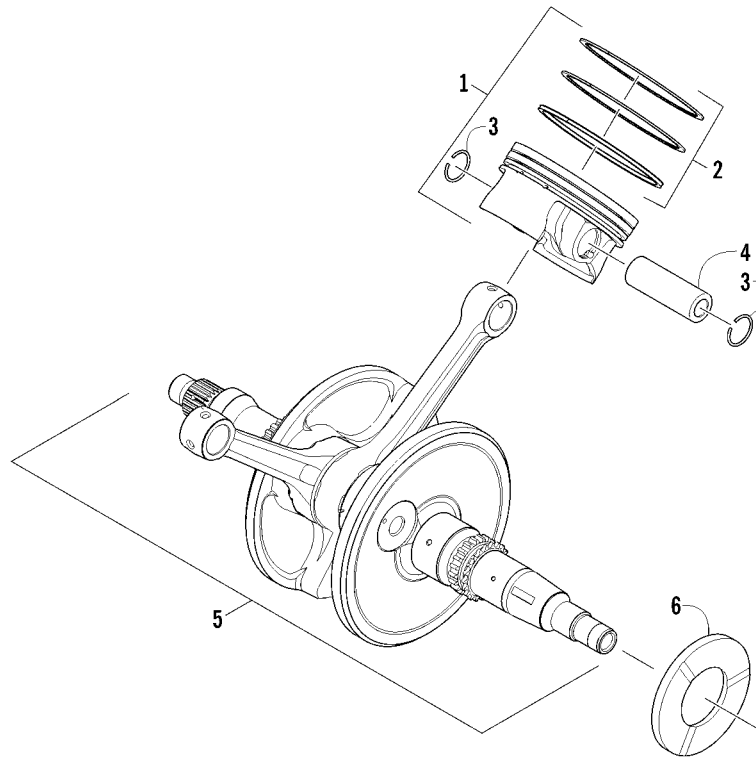


CRANKCASE ASSEMBLY

(Engine Serial No. 2010690 and Up)

0746-609

Ref	Part No.	New	Qty	Description	Ref	Part No.	New	Qty	Description
1	0801-211	X	1	Crankcase - Assembly (inc. 2-13)	21	0830-162		1	O-Ring, Oil Filler Cover
2	0830-035		1	● Seal, Driveshaft	22	0812-081		1	Cover, Oil Filler
3	0832-048		1	● Bearing	23	8468-616		3	Screw, Machine
4	0832-042		1	● Bearing	24	0801-073		1	Stick, Oil Level
5	0832-050		2	● Bearing	25	0830-010		1	O-Ring
6	0832-049		1	● Bearing	26	0812-078		1	Fitting, Oil - Threaded
7	0832-055		1	● Bearing - Assembly (inc. 8)	27	0830-191		1	Gasket, Breather
8	0832-057		1	●● Bearing	28	0829-048		2	Pin, Dowel
9	0801-002		1	● Plug, Engine Case	29	0832-084		1	Bearing
10	0822-052		1	● Seal, Countershaft - Right	30	0831-086		1	Circlip
11	0829-003		2	● Pin, Dowel	31	0801-193		1	Cover, Breather
12	0829-002		2	● Pin, Dowel	32	8468-625		5	Screw, Machine
13	0812-008		1	● Union, Oil Filter	33	8468-630		2	Screw, Machine
14	0812-029		1	Filter, Oil	34	8412-875		1	Screw, Cap
15	0830-172		1	O-Ring	35	8468-660		8	Screw, Machine
16	0812-060		1	Fitting, Oil	36	8468-640		2	Screw, Machine
17	8468-616		2	Screw, Machine	37	8412-830		3	Screw, Cap
18	0623-914		2	Screw, Self-Tapping	38	8412-860		10	Screw, Cap
19	0812-079		1	Plate, Oil Sump	39	8412-850		1	Screw, Cap
20	0812-052		1	Valve, Oil-Relief - Assembly	40	0818-103		1	Plug

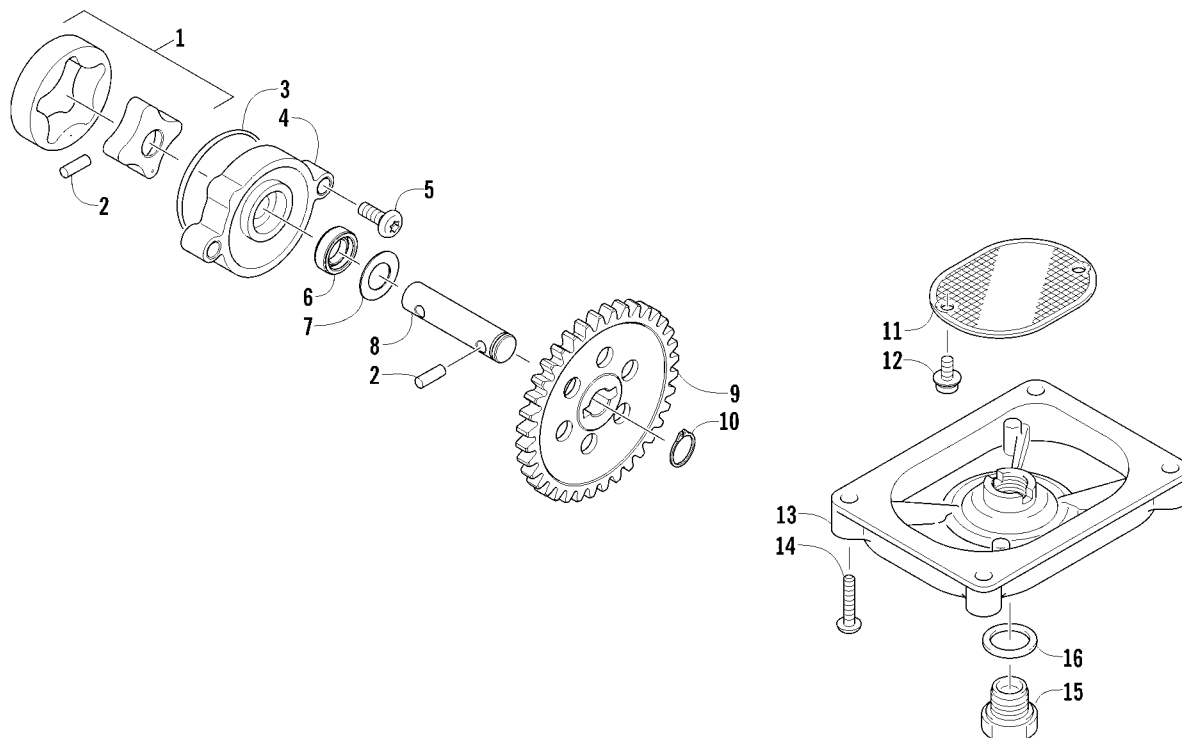


CRANKSHAFT AND PISTON ASSEMBLY

0745-070

Ref	Part No.	New	Qty	Description	Ref	Part No.	New	Qty	Description
1	0805-299		2	Piston Set - Assembly (inc. 2-4)	4	0805-198		2	● Pin, Piston
2	0805-164		2	● Ring, Piston - Set	5	0805-327	X	1	Crankshaft - Assembly
3	0805-199		4	● Circlip, Piston Pin	6	0805-273		1	Washer, Thrust

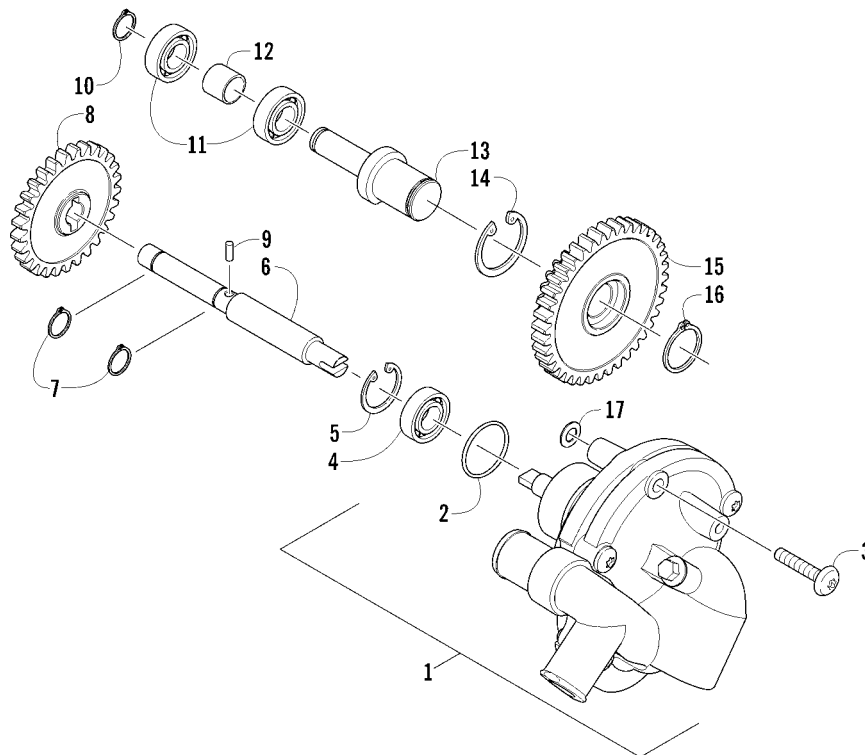
36



OIL PUMP ASSEMBLY

0745-052

Ref	Part No.	New	Qty	Description	Ref	Part No.	New	Qty	Description
1	0812-041	1	1	Gerotor - Set	9	0812-045	1	1	Gear, Driven
2	0829-009	2	2	Pin, Dowel	10	0831-002	1	1	Ring, Retaining
3	0812-048	1	1	O-Ring	11	0812-057	1	1	Strainer, Oil
4	0812-040	1	1	Housing, Oil Pump	12	0826-040	2	2	Screw, Machine
5	8468-625	2	2	Screw, Machine	13	0812-053	1	1	Cap, Oil Strainer
6	0812-047	1	1	Seal, Oil Pump	14	8468-625	4	4	Screw, Machine
7	0828-007	1	1	Shim	15	0812-006	1	1	Plug, Drain
8	0812-046	1	1	Shaft, Oil Pump	16	0830-017	1	1	Gasket, Drain Plug

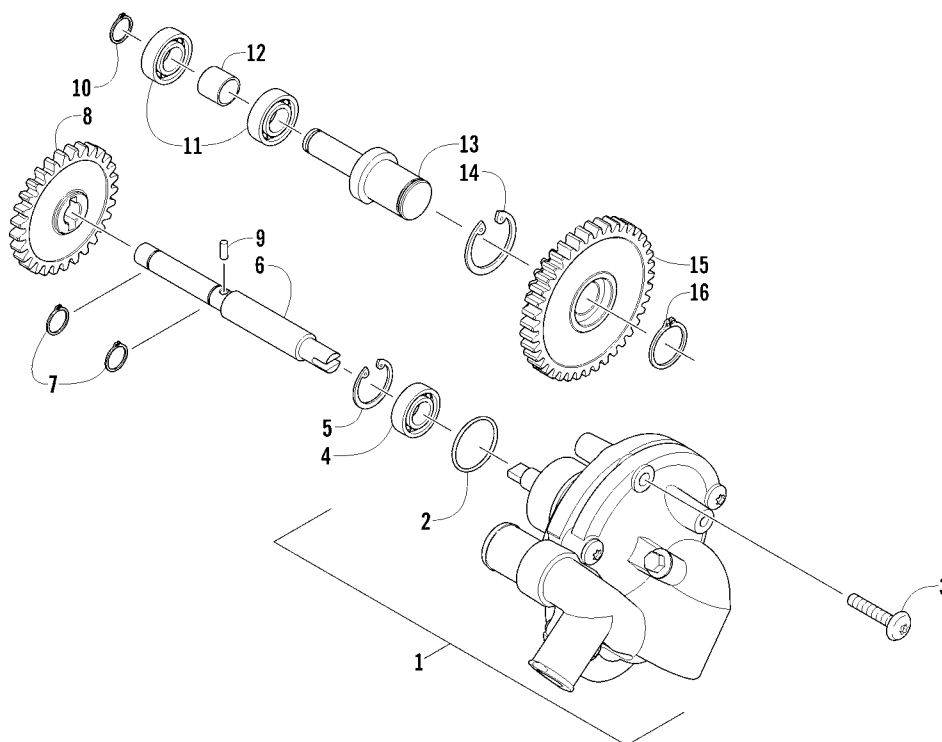


WATER PUMP ASSEMBLY

(Engine Serial No. Up to 2010689)

0745-537

Ref	Part No.	New	Qty	Description	Ref	Part No.	New	Qty	Description
1	0813-056		1	Pump, Water - Assembly (inc. 2)	10	0831-002		1	Ring, Retaining
2	0830-029		1	● O-Ring	11	0832-046		2	Bearing
3	8468-650		2	Screw, Machine	12	0813-028		1	Spacer, Idler - Water Pump
4	0832-084		1	Bearing	13	0813-026		1	Shaft, Water Pump Idler Gear
5	0831-086		1	Circlip	14	0831-004		1	Ring, Retaining
6	0813-041		1	Shaft, Driven Gear	15	0813-027		1	Gear, Idler - Water Pump - Drive
7	0831-010		2	Ring, Retaining	16	0831-040		1	Ring, Retaining
8	0813-043		1	Gear, Driven	17	0828-038		2	Washer
9	0829-009		1	Pin, Dowel					

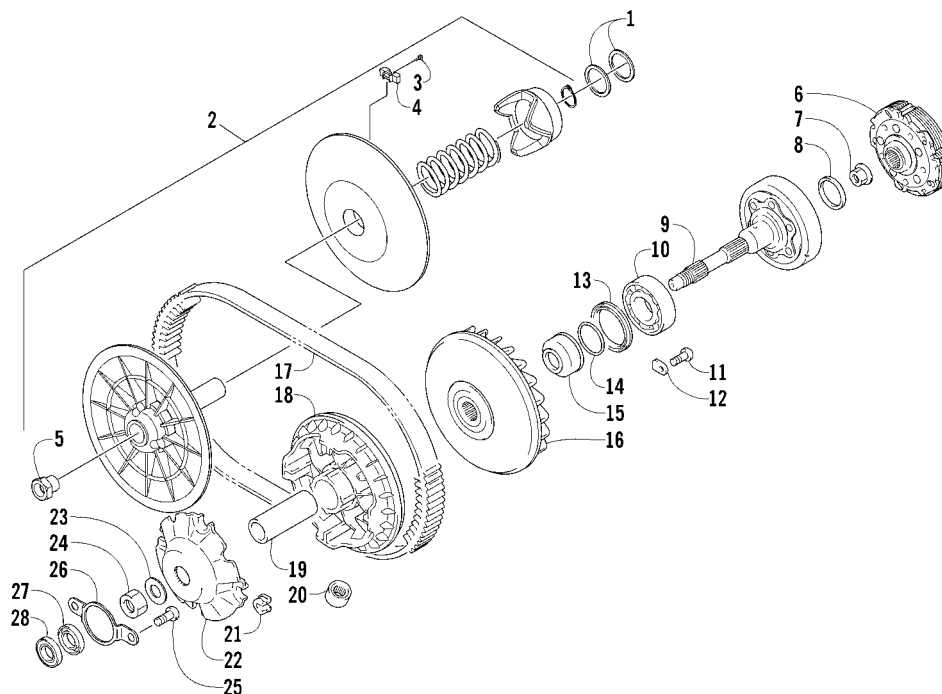


WATER PUMP ASSEMBLY

(Engine Serial No. 2010690 and Up)

0745-053

Ref	Part No.	New	Qty	Description	Ref	Part No.	New	Qty	Description
1	0813-059	X	1	Pump, Water - Assembly (inc. 2)	9	0829-009		1	Pin, Dowel
2	0830-029		1	● O-Ring	10	0831-002		1	Ring, Retaining
3	8468-650		2	Screw, Machine	11	0832-046		2	Bearing
4	0832-084		1	Bearing	12	0813-028		1	Spacer, Idler - Water Pump
5	0831-086		1	Circlip	13	0813-026		1	Shaft, Water Pump Idler Gear
6	0813-041		1	Shaft, Driven Gear	14	0831-004		1	Ring, Retaining
7	0831-010		2	Ring, Retaining	15	0813-027		1	Gear, Idler - Water Pump - Drive
8	0813-043		1	Gear, Driven	16	0831-040		1	Ring, Retaining

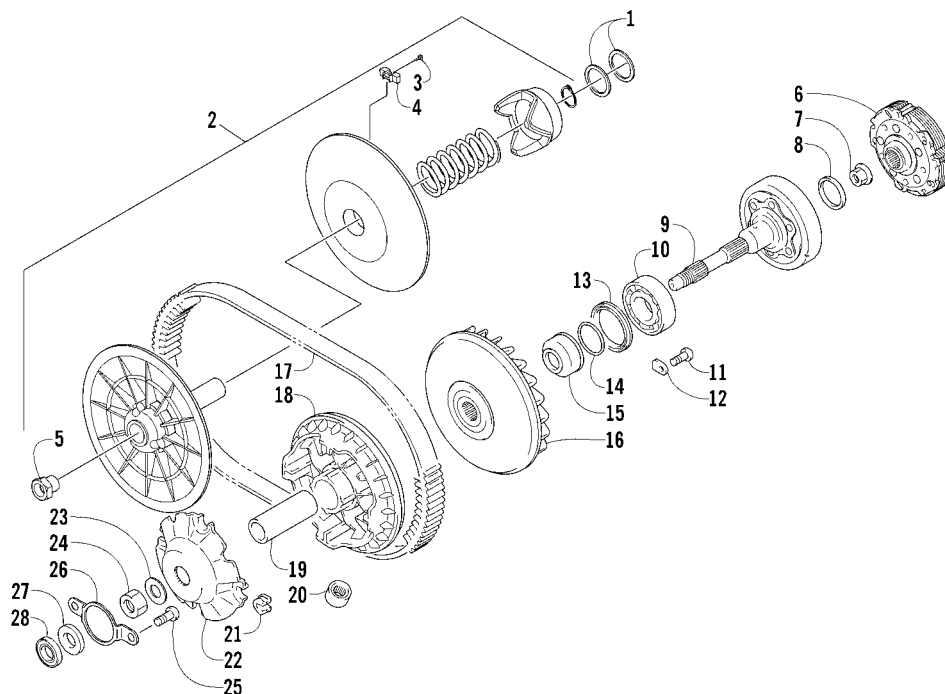


TRANSMISSION ASSEMBLY

(Engine Serial No. Up to 20044789)

0746-583

Ref	Part No.	New	Qty	Description	Ref	Part No.	New	Qty	Description
1	0828-076		2	Shim, 25 x 30 x 0.90 mm	15	0823-015		1	Spacer, Fixed Drive Face
2	0823-355	X	1	Pulley, Driven - Assembly (inc. 3-5)	16	0823-272	X	1	Face, Fixed Drive
3	0823-177		3	● Screw, Machine	17	0823-231		1	Belt, Drive
4	0823-176		3	● Shoe, Cam	18	0823-273	X	1	Face, Movable Drive
5	0823-178		1	● Nut, Driven Pulley	19	0823-271	X	1	Spacer, Movable Drive Face
6	0823-310		1	Clutch, Centrifugal - 6 Plate	20	0823-295	X	8	Roller, Movable Drive Face
7	0827-011		1	Nut	21	0823-277	X	4	Damper, Movable Drive Face
8	0830-189		1	Seal, Clutch Housing - Left	22	0823-276	X	1	Plate, Movable Drive Face
9	0821-002		1	Housing, Clutch	23	0828-106		1	Washer
10	0832-009		1	Bearing	24	0827-010		1	Nut
11	0826-029		2	Screw, Machine	25	0826-031		2	Screw, Machine
12	0822-010		2	Retainer, Bearing	26	0823-020		1	Retainer, Bearing
13	0830-188		1	Seal, Clutch Housing - Right	27	0830-176		1	Seal
14	0470-531		1	O-Ring	28	0832-010		1	Bearing

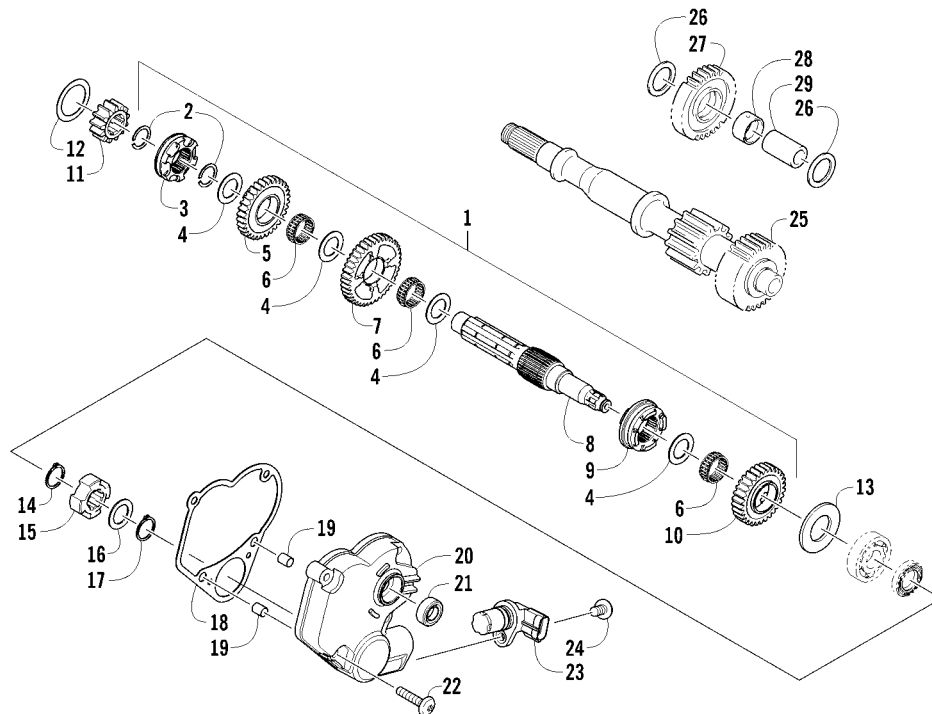


TRANSMISSION ASSEMBLY

(Engine Serial No. 20044790 and Up)

0746-586

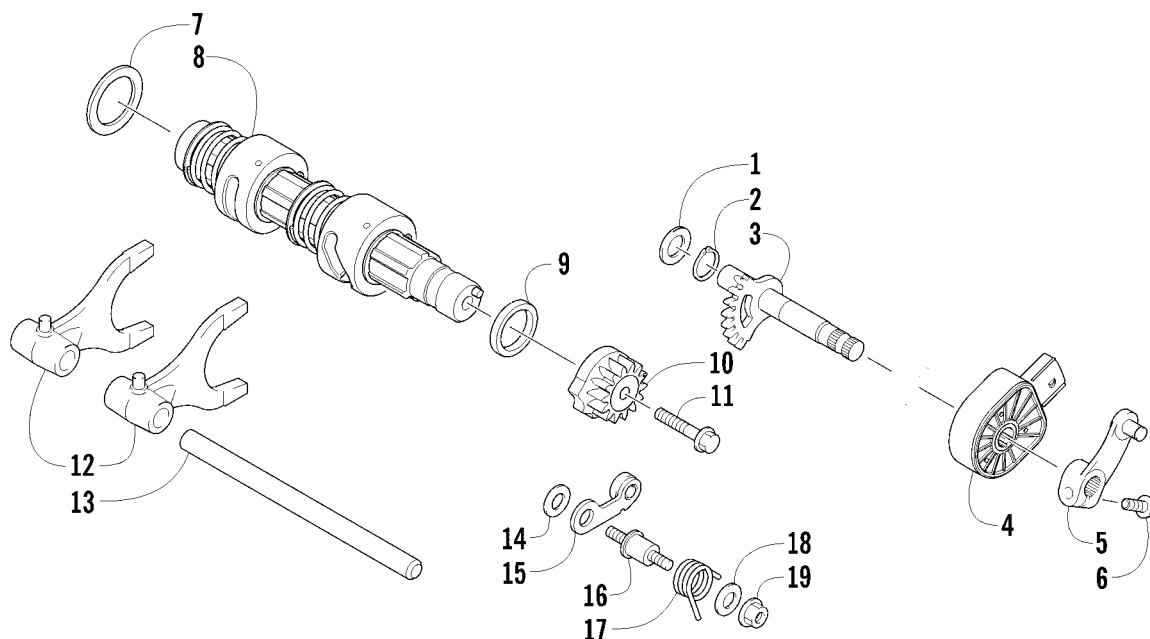
Ref	Part No.	New	Qty	Description	Ref	Part No.	New	Qty	Description
1	0828-076		2	Shim, 25 x 30 x 0.90 mm	15	0823-015		1	Spacer, Fixed Drive Face
2	0823-355	X	1	Pulley, Driven - Assembly (inc. 3-5)	16	0823-272	X	1	Face, Fixed Drive
3	0823-177		3	● Screw, Machine	17	0823-231		1	Belt, Drive
4	0823-176		3	● Shoe, Cam	18	0823-273	X	1	Face, Movable Drive
5	0823-178		1	● Nut, Driven Pulley	19	0823-271	X	1	Spacer, Movable Drive Face
6	0823-310		1	Clutch, Centrifugal - 6 Plate	20	0823-295	X	8	Roller, Movable Drive Face
7	0827-011		1	Nut	21	0823-277	X	4	Damper, Movable Drive Face
8	0830-189		1	Seal, Clutch Housing - Left	22	0823-276	X	1	Plate, Movable Drive Face
9	0821-002		1	Housing, Clutch	23	0828-106		1	Washer
10	0832-009		1	Bearing	24	0827-010		1	Nut
11	0826-029		2	Screw, Machine	25	0826-031		2	Screw, Machine
12	0822-010		2	Retainer, Bearing	26	0823-020		1	Retainer, Bearing
13	0830-188		1	Seal, Clutch Housing - Right	27	0806-128	X	1	Spacer
14	0470-531		1	O-Ring	28	0832-060		1	Bearing



SECONDARY TRANSMISSION ASSEMBLY

0745-540

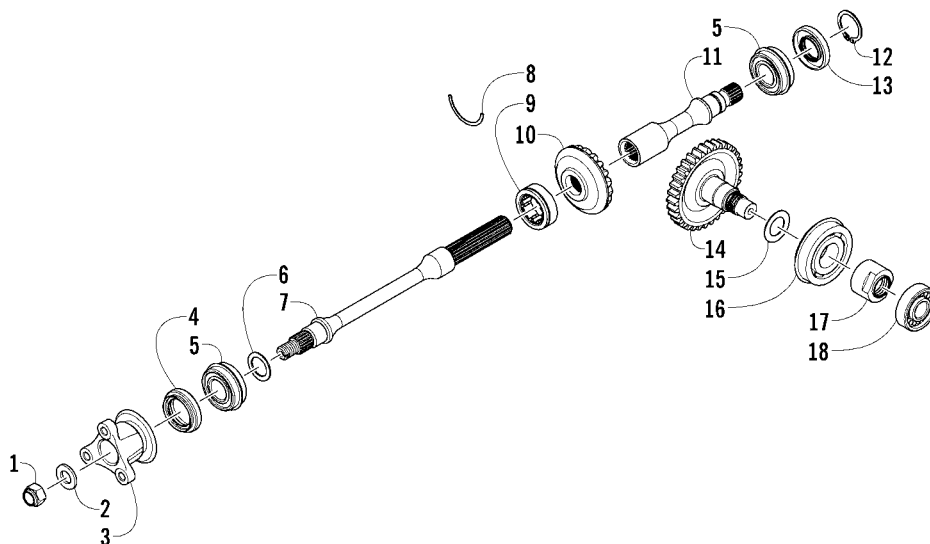
Ref	Part No.	New	Qty	Description	Ref	Part No.	New	Qty	Description
1	0822-144	X	1	Countershaft Assembly (inc. 2-10)	16	0828-069		1	Washer, Thrust
2	0831-085		2	● Ring, Retaining	17	0831-039		1	Ring, Retaining
3	0822-120		1	● Gear Select, Reverse	18	0830-194		1	Gasket
4	0822-121		4	● Shim	19	0829-048		2	Pin, Dowel
5	0822-119		1	● Gear, Reverse Driven	20	0806-105		1	Housing, Speedometer Sensor
6	0832-082		3	● Bearing	21	0830-044		1	Seal
7	0822-114		1	● Gear, Driven - Low	22	8468-630		4	Screw, Machine
8	0822-113		1	● Countershaft	23	0430-091		1	Sensor, Speedometer
9	0822-145	X	1	● Gear Select, Sliding	24	8468-620		1	Screw, Machine
10	0822-148	X	1	● Gear, Driven - High	25	0822-001		1	Driveshaft
11	0822-125		1	Gear, Drive	26	0828-016		2	Washer, Thrust
12	0828-019		1	Washer, Thrust	27	0822-011		1	Gear, Reverse Idle
13	0828-011		1	Washer	28	0822-012		1	Bushing
14	0831-040		1	Ring, Retaining	29	0822-015		1	Shaft, Reverse Idle
15	0822-050		1	Trigger, Speedometer Sensor					



GEAR SHIFTING ASSEMBLY

0746-409

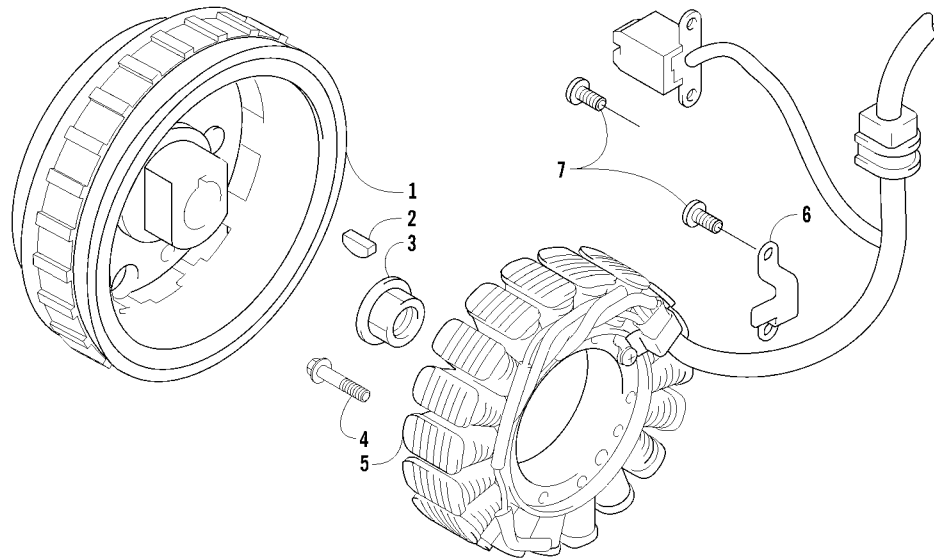
Ref	Part No.	New	Qty	Description	Ref	Part No.	New	Qty	Description
1	0828-036		1	Washer	11	0826-006		1	Screw, Cap
2	0831-010		1	Ring, Retaining	12	0818-072		2	Fork, Shift
3	0818-095		1	Shaft, Sub-Gear Shift	13	0818-006		1	Shaft, Shift Fork
4	0409-125		1	Switch, Gear Position	14	0828-038		1	Washer
5	0818-014		1	Arm, Shift	15	0818-002		1	Stopper, Cam
6	8468-620		1	Screw, Machine	16	0818-004		1	Support, Cam Stopper
7	0828-040		1	Washer	17	0818-144	X	1	Spring
8	0818-149	X	1	Shaft, Gear Shift - Assembly	18	0828-035		1	Washer
9	0828-131	X	1	Spacer	19	8424-602		1	Nut
10	0818-145	X	1	Cam, Gear Shift					



SECONDARY DRIVE ASSEMBLY

0746-584

Ref	Part No.	New	Qty	Description	Ref	Part No.	New	Qty	Description
1	0827-013		1	Nut	10	0822-106		1	Gear, Secondary Driven
2	0828-020		1	Washer	11	0819-122	X	1	Shaft, Secondary Driven - Rear
3	0819-126	X	1	Flange, Output Joint	12	0831-011		1	Ring, Retaining
4	0830-043		1	Seal, Oil	13	0830-214	X	1	Seal, Oil
5	0832-017		2	Bearing	14	0822-132		1	Gear, Secondary Drive
6	0828-021	AR		Shim, 25 x 34 x 0.25 mm	15	0828-119	AR		Shim, 30 x 48 x 0.25 mm
	0828-022	AR		Shim, 25 x 34 x 0.30 mm		0828-120	AR		Shim, 30 x 48 x 0.30 mm
	0828-023	AR		Shim, 25 x 34 x 0.70 mm		0828-121	AR		Shim, 30 x 48 x 0.35 mm
	0828-024	AR		Shim, 25 x 34 x 0.90 mm		0828-122	AR		Shim, 30 x 48 x 0.90 mm
	0828-025	AR		Shim, 25 x 34 x 0.95 mm		0828-123	AR		Shim, 30 x 48 x 0.95 mm
	0828-026	AR		Shim, 25 x 34 x 1.00 mm		0828-124	AR		Shim, 30 x 48 x 1.00 mm
	0828-027	AR		Shim, 25 x 34 x 1.05 mm		0828-125	AR		Shim, 30 x 48 x 1.05 mm
	0828-028	AR		Shim, 25 x 34 x 1.10 mm		0828-126	AR		Shim, 30 x 48 x 1.10 mm
	0828-029	AR		Shim, 25 x 34 x 1.15 mm		0828-127	AR		Shim, 30 x 48 x 1.15 mm
7	0819-115	X	1	Shaft, Secondary Driven - Front	16	0832-083		1	Bearing
8	0819-011		1	Ring, Driven Bearing	17	0827-060		1	Nut
9	0832-016		1	Bearing, Driven Gear	18	0832-050		1	Bearing



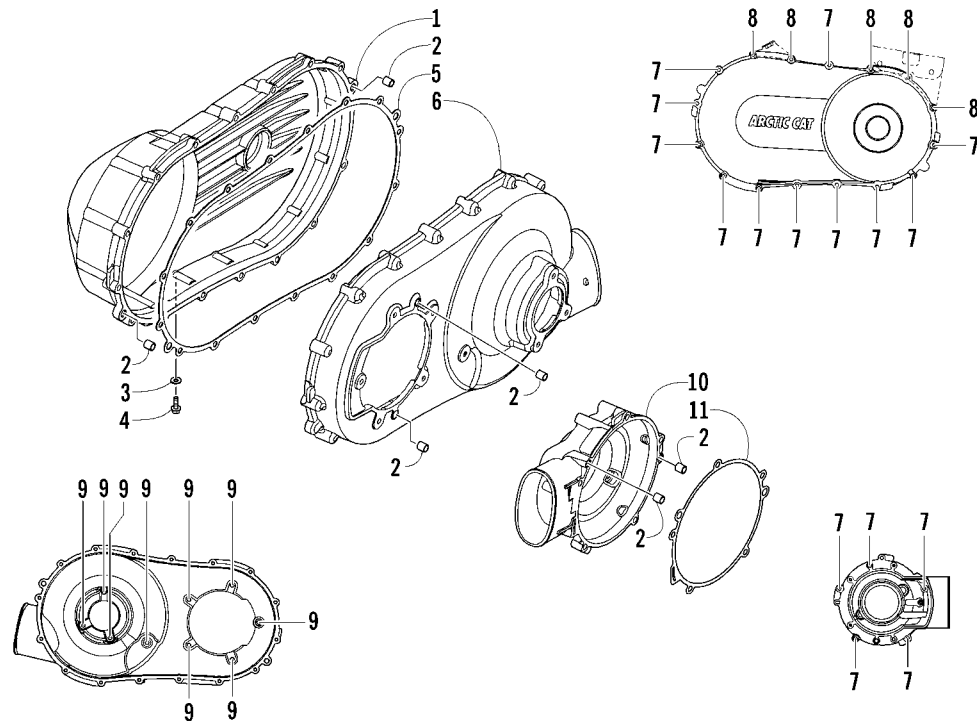
MAGNETO ASSEMBLY

0746-026

0802-064

Ref	Part No.	New Qty	Description	Ref	Part No.	New Qty	Description	
1	0802-059	1	Rotor/Flywheel	5	0802-064	X	1	Stator - Assembly
2	0829-012	1	Key	6	0831-064		1	Clamp
3	0827-010	1	Nut	7	8470-510		4	Screw, Machine
4	8409-632	3	Screw, Cap					

46



CLUTCH SIDE ENGINE COVERS

0746-587

Ref	Part No.	New Qty	Description	Ref	Part No.	New Qty	Description
1	0806-112	1	Cover, Outside	7	8468-630	16	Screw, Machine
2	0829-048	6	Pin, Dowel	8	8468-640	5	Screw, Machine
3	0830-013	1	Washer, Crush	9	8468-616	9	Screw, Machine
4	8408-812	1	Screw, Cap	10	0806-109	1	Cover, Clutch
5	0830-137	1	Gasket, Cover	11	0830-133	1	Gasket, Clutch Cover
6	0806-110	1	Cover, Inside				

